



2023 Western Australian Windsurfer Open Championships

Organising Authority (OA)

South of Perth Yacht Club

Coffee Point, 2 Canning Beach Rd Applecross, Perth Western Australia 6153

GENERAL & COURSE RACING SAILING INSTRUCTIONS (SI)

[DP] denotes a rule for which the penalty is applied according to the RRS Introduction – “Notation”.

[NP] denotes that a breach of this rule will not be grounds for a protest by a board. This changes RRS60.1(a).

[SP] denotes a rule for which a standard penalty may be applied by the Race Committee (RC) without a hearing.

This changes RRS A5.

1. RULES

- 1.1 The event will be governed by the rules as defined in the Racing Rules of Sailing (RRS), except where they are changed by the Notice of Race (NoR) or by these Sailing Instructions (SI). The Windsurfing Fleet Racing Rules, Appendix B of the RRS do not apply.
- 1.2 RRS 31 - Touching a Mark is changed to: While racing, a board shall not touch a starting mark before starting or a finishing mark after finishing.
A board may touch a mark that begins, bounds or ends the leg of the course on which she is sailing.
- 1.3 RRS 42 – Propulsion (*Pumping*) As per Windsurfer Class rule “C1.1 (d), RRS 42 is amended to read: A board shall be propelled only by the action of the wind on the sail and by the action of the water on the hull through the unassisted actions of the competitor except that when:
 - (i) Course Racing and
 - (ii) competitors are sailing to windward or on a close-hauled course pumping (continuous and/or repetitive movement of the rig to induce wind-flow over the sail) is prohibited except for the first 30 seconds after the starting signal.”
SI 1.3 and class rule C1.1 (d)(ii) is changed to add:
“and from the preparatory signal to the starting signal”.
- 1.4 RRS Appendix P shall not apply.
- 1.5 Appendix T – Arbitration shall apply.
- 1.6 **Supplementary Sailing Instructions (SSI’s) will be issued for the Marathon and the Slalom Events.**

2 CHANGES TO SAILING INSTRUCTIONS

Any change to the sailing instructions will be posted before 0800 on the day it will take effect, except that any change to the time of the first warning signal of the day will be posted by 1800 on the day before it will take effect.

3 COMMUNICATIONS WITH COMPETITORS

- 3.1 Notices to competitors will be posted on the official notice board located in the Centreboard Clubhouse.
- 3.2 The race office is located at South of Perth Yacht Club:
Telephone 08 9364 5844, email sailingadministrator@sopyc.com.au
- 3.3 [DP] While racing, except in an emergency, a boat shall not make voice or data transmissions and shall not receive voice or data communication that is not available to all boats.

4 CODE OF CONDUCT [DP]

- 4.1 Competitors and support persons shall comply with reasonable requests from race officials.
- 4.2 Each competitor shall fly a streamer corresponding to their division.

5 SIGNALS MADE ASHORE

- 5.1 Signals made ashore will be displayed at the Centreboard Club Lawn Flagpole.
- 5.2 When flag AP is displayed ashore, '1 minute' is replaced with 'not less than 30 minutes' in Race Signals AP.

6 SCHEDULE OF RACES

- 6.1 The following program is indicative and subject to variation.

Day/Date	Event	Time
DATE	TIME	EVENT
Friday 15 th	0900 to 1200	Registration
Friday 15 th	1230	Welcome & Briefing
Friday 15 th	1400	First Warning signal
Saturday 16 th	0800	Briefing
Saturday 16 th	0900	First Warning signal
Saturday 16 th	1900	Social Event
Sunday 17 th	0800	Briefing
Sunday 17 th	0900	First warning signal
Sunday 17 th	TBA	Presentations ASAP after racing

- 6.2 To alert boats that a course race or sequence of races will begin soon, the orange starting line flag will be displayed with one sound at least three minutes before a warning signal is made.
- 6.3 On the last scheduled day of racing no warning signal will be made after **1600**.
- 6.4 Up to 7 Course Racing Races are scheduled for each division and up to 4 races per day (a maximum of 3 races back-to-back).
- 6.5 Changes to the first warning signal of the day will be advised by Notices to Competitors and the event WhatsApp group prior to 1800 on the previous day and by the briefing prior to each race session.

7 FLEETS AND DIVISIONS

Competition divisions will be defined as the following split of competitors:

Division A:	Light weight	(may include U15 – U19 sailors)
Division B:	Medium weight	(may include U15 – U19 sailors)
Division C:	Heavy weight	(may include U15 – U19 sailors)
Division D:	Super Heavy weight	(may include U15 – U19 sailors)
Division F:	Women	(may include U15 – U19 sailors)

8 CLASS FLAGS

8.1 The Windsurfer Class flag is a windsurfer class logo on a solid colour background.

8.2 Divisions will be advised by the Race Committee (RC) and signalled by flag background colour as shown by the following example:

Light weight	Green
Medium weight	Red
Heavy weight	Yellow
Super Heavy Weight	Blue
Women	Pink

9 RACING AREA

The racing areas are the regions that extend 50 metres beyond the course including the start and finish line and their extensions in which a board normally sails while racing. The racing areas is Melville Water.

10 COURSES

10.1 The diagram in Addendum B shows the probable courses for the **Course Racing** event. The RC may change the course racing format to suit weather and logistics for the event.

10.2 Further information for each course and event will be made available on the official notice boards.

10.3 The course to be sailed, Course 2 or Course 3 will be indicated by a flag with either 2 or 3 at the warning signal.

11 MARKS - Course Racing

11.1 Course marks are Yellow inflatable buoys.

11.2 New marks, refer SI 13, are red inflatable buoys.

11.3 Start mark – RC Vessel with an orange flag and a pin end boat with an orange flag.

11.4 Finish mark – RC Vessel with a blue flag and a blue inflatable buoy.

12 THE START

12.1 Races will be started using RRS 26.

12.2 The starting line is between a staff displaying an orange flag on the race committee boat at the starboard end and a staff displaying an orange flag on the pin boat at the port end of the line.

12.3 Boards whose warning signal has not been made shall avoid the starting area during the starting sequence for other races.

12.4 A boat that does not start within 4 minutes after her starting signal will be scored Did Not Start (DNS) without a hearing. This changes RRS A5.

13 CHANGE THE NEXT LEG OF THE COURSE

To change the next leg of the course, the RC will lay a new mark (or move the finishing line) and remove the original mark as soon as practicable. When in a subsequent change a new mark is replaced, it will be replaced by an original mark.

14 THE FINISH

The finishing line is between a staff displaying a blue flag on the RC boat at the starboard end and the course side of the port end finish mark.

15 PROPULSION

15.1 Refer SI 1.3 & 1.4.

15.2 One long sound signal may be made to indicate 30 seconds after the starting signal.

16 RRS44 PENALTIES AT THE TIME OF AN INCIDENT

RRS 44 is changed to: (refer Appendix B4)

44.1 Taking a Penalty

A board may take a 360°-Turn Penalty when she may have broken one or more rules of Part 2 in an incident while racing or when she may have broken rule 31 by touching a start or finish mark. However, if the board caused injury or serious damage or, despite taking a penalty, gained a significant advantage in the race or series by her breach, her penalty shall be to retire.

44.2 360°-Turn Penalty

After getting well clear of other boards as soon after the incident as possible, a board takes a 360°-Turn Penalty by promptly making a 360° turn with no requirement for a tack or a gybe. When a board takes the penalty at or near the finishing line, her hull shall be completely on the course side of the line before she finishes.

17 TIME LIMITS

17.1 Course Racing

The Mark 1 Time Limit, Course Race Time Limit & the Finishing Window are shown in the table below.

Mark 1 Time Limit	Race Time Limit	Finishing Window	Target Time
<i>10 mins</i>	<i>40 mins</i>	<i>10 mins</i>	<i>25 mins</i>

17.2 If no boat has passed the first mark within the Mark 1 Time Limit, the race will be abandoned.

17.3 The Finishing Window is the time for boats to finish after the first boat sails the course and finishes. Boats failing to finish within the Finishing Window, and not subsequently retiring, penalised or given redress, will be scored DNF without a hearing.

18 HEARING REQUESTS

18.1 The protest time limit is 60 minutes after the last boat finishes the last race of the day or the RC signals no more racing today, whichever is later. The time will be posted on the official notice board.

- 18.2 Hearing request forms are available from the race office.
- 18.3 Notices will be posted no later than 30 minutes after the protest time limit to inform competitors of hearings in which they are parties or named as witnesses.
- 18.4 Hearings will be held in the protest room.

19 SCORING – refer NoR

- 19.1 Each Division will be scored separately.
- 19.2 **Course Racing**

The course racing event is scored using Low Point System – RRS Appendix A.

 - (a) Three (3) course races are required to be completed to constitute a series.
 - (b) When fewer than **5** races have been completed, a board's course racing series score is the total of her course race scores.
 - (c) When from **5 to 7** races have been completed, a board's course racing series score is the total of her course race scores excluding her worst score.

20 SAFETY REGULATIONS

- 20.1 Competitors shall always wear a personal flotation device that shall conform to the minimum standard ISO 12402-5 (level 50) whilst afloat.
- 20.2 [SP] It is mandatory to Sign On and Sign Off every day. Procedures will be advised at the briefing. The SP penalty for any infringement of this instruction is 2 points for each infringement.
- 20.3 [DP] A boat that retires from a race shall notify the race committee. At the first reasonable opportunity the boat shall complete a retirement declaration form.

21 REPLACEMENT OF EQUIPMENT [DP]

Substitution of damaged or lost equipment is not allowed unless authorised in writing by the Regatta Director/RC. Requests for substitution shall be made to the RC at the first reasonable opportunity, which may be after the race.

22 EQUIPMENT AND MEASUREMENT CHECKS

- 22.1 Each competitor shall register at the registration desk and complete all required registration and equipment inspection formalities before racing. A competitor that does not complete all required registration and equipment formalities will not be entered to the event under RRS 75
- 22.2 Equipment may be inspected at any time for compliance with the class rules, NoR and SI's.
- 22.3 [DP] When instructed by a race official, on the water, a competitor shall proceed to a designated area for equipment inspection.
- 22.4 [DP] Competitors shall not wear or carry clothing or equipment for the purpose of increasing their weight. However, a competitor may wear a drinking container that may have a capacity of up to 1.5 litres and weigh no more than 1.75 kilograms when full.

23 OFFICIAL VESSELS

Official vessels will be identified as follows:

Race Committee Vessels	Flag	"RC"
Race Support Vessels	Sign or Flag	"Safety"
Jury	Flag	"J" or "Jury"
Media	Flag	"M" or "Media"

24 SUPPORT TEAMS [DP]

- 24.1 Coach and support boats shall stay outside areas where boards are racing from the time of the preparatory signal for the first fleet to start until all boards have finished or retired or the RC signals a postponement or abandonment except to assist a crew in distress or at the request of the RC.
- 24.2 Support boats shall comply with any reasonable request from a race official.
- 24.3 Support boat personnel shall always wear a personal flotation device that shall conform to the minimum standard ISO 12402-5 (level 50) whilst afloat.
- 24.4 Support boat drivers shall use the kill cord in the recommended manner.
- 24.5 All coach boats shall carry a rope that floats (minimum 15 metres long and 8 mm thick).
- 24.6 An alleged breach of this SI may be referred to the RC and PC. The RC may instruct the OA to withdraw accreditation and access rights to the regatta venue and the course areas from the offending party without the option of replacement during the regatta.
- 24.7 Each coach/support boat is required to maintain a listening watch on VHF channel 69 (Alpha Course) or Channel 75 (Bravo Course).

25 TRASH DISPOSAL

Trash may be placed aboard official or support team vessels.

26 BERTHING [DP]

Boards shall be kept in their assigned places while in the boat park.

27 RISK STATEMENT

RRS 3 states: 'The responsibility for a boat's decision to participate in a race or to continue to race is hers alone.' By participating in this event each competitor agrees and acknowledges that sailing is a potentially dangerous activity with inherent risks. These risks include strong winds and rough seas, sudden changes in weather, failure of equipment, boat handling errors, poor seamanship by other boats, loss of balance on an unstable platform and fatigue resulting in increased risk of injury. **Inherent in the sport of sailing is the risk of permanent, catastrophic injury or death by drowning, trauma, hypothermia or other causes.**

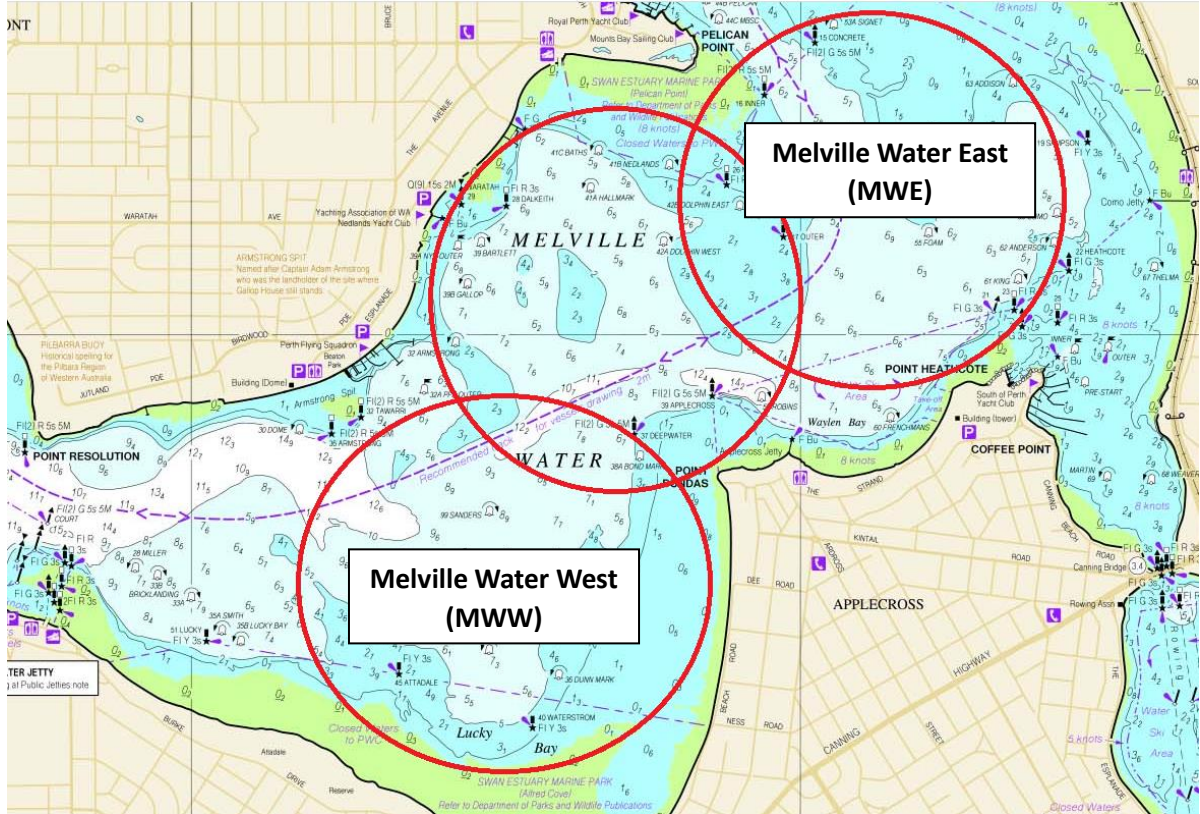
28 INSURANCE

Each participating boat shall be insured with valid third-party liability insurance with a minimum cover of **AUD10,000,000** per incident or the equivalent.

29 Link to event page:

<https://sopyc.com.au/on-water/off-the-beach/off-beach-regattas/windsurf23states/>

Addendum A
[Site Map]
[Course Areas]



Addendum B

[Course Racing Courses – Windward Leeward(s) and Triangle 2 laps, 3 laps]

Course 2 will be recognized through the display of a flag featuring the number 2.

Course 3 will be recognized through the display of a flag featuring the number 3.

Course	Mark Rounding Order
2	Start – 1 – 3 – 1 - 2 - PB - Finish
3	Start – 1 – 3 – 1 – 3 - 1 - 2 - PB - Finish

