



**South of Perth Yacht Club
(Organising Authority)**

**Off the Beach
2023 Winter Series
Invitational**

**SAILING
INSTRUCTIONS**

**South of Perth Yacht Club
OFF THE BEACH 2023 WINTER SERIES
SAILING INSTRUCTIONS**

South of Perth Yacht Club invites entries from eligible classes to participate in the Off the Beach 2023 Winter Series commencing 21 May 2023.

The notation '[DP]' in a rule in the NoR means that the penalty for a breach of that rule may, at the discretion of the Protest Committee, be less than a disqualification.

The Organising Authority (OA) is South of Perth Yacht Club Inc. (SoPYC).

1. RULES

1.1 The series will be governed by the following rules:

- a) The Racing Rules of Racing (RRS).
- b) Australian Sailing Special Regulations Part 2 for Off The Beach Boats.
- c) Class rules of the respective classes (except where any of these are altered by the Sailing Instructions) will apply.
- d) The Sailing Instructions.
- e) RRS Appendix T, Arbitration shall apply.

1.2 Racing rules(s) will be changed as follows:

- a) RRS 44.1 is changed so that the two-turns penalty is replaced by the one-turn penalty.
- b) RRS 60.1(a) is changed so that (NP) denotes a rule that shall not be grounds for a protest by a boat.
- c) RRS 63.1, 64 and Appendix A5 are amended to enable the Race Committee to apply a standard penalty (SCP) without a hearing for some breaches of the rules. The SCP for this regatta is 2 points.

2. NOTICES TO COMPETITORS

Notices to competitors will be posted on the official noticeboard located at the Centreboard Clubhouse and online at

<https://sopyc.com.au/on-water/off-the-beach/off-beach-regattas/winter-series/>

3. CHANGES TO SAILING INSTRUCTIONS

Any change to the Sailing Instructions will be posted not less than 90 minutes before the scheduled warning signal of the day it will take effect, except that any change to the time of the first warning signal for an event will be posted by 1800 on the day before it will take effect

4. SIGNALS MADE ASHORE

Signals made ashore will be displayed from the mast adjacent to the Centreboard Clubhouse. Signals that apply to one or more classes will be flown over the Class flag/s.

When flag 'AP' is displayed ashore "1 minute" is replaced by 'not less than 30 minutes' in a race signal AP.









5. SCHEDULE OF RACES

Date - 2023	1 st Warning	Classes
Sunday 21 May	1300	Flying15-125-29er-Viper640-Optimist-Open Skiff-Pelican-Windsurfer LT-ILCA
Sunday 11 Jun	1300	Flying15-125-29er-Viper640- Optimist-Open Skiff-Pelican-Windsurfer LT-ILCA
Sunday 25 Jun	1300	Flying15-125-29er-Viper640- Optimist-Open Skiff-Pelican-ILCA
Sunday 23 Jul	1300	Flying15-125-29er-Viper640- Optimist-Open Skiff-Pelican-Windsurfer LT-ILCA
Sunday 13 Aug	1300	Flying15-125-29er-Viper640- Optimist-Open Skiff-Pelican-Windsurfer LT-ILCA
Sunday 27 Aug	1300	Flying15-125-29er-Viper640- Optimist-Open Skiff-Pelican-ILCA

- 5.1 Number of races per day for each class will be a maximum of 3.
- 5.2 On the last scheduled day of racing for each group, no warning signal will be made after 1600.

6. CLASS FLAGS

6.1 The class flags will be as follows:

SINGLEHANDED CLASSES		DOUBLEHANDED CLASSES	
Optimist		Pelican	
ILCA - Laser		125	
Flying Fifteen		29er	
O'pen Skiff		Windsurfer LT	

6.2 Competitors in the Optimist & O'pen Skiff Intermediate fleets shall fly a pink-coloured streamer attached to the top of their Sprit. The streamer will be supplied by the Organising Authority (OA).

7. RACING AREA

The racing area will be Melville Water East as shown in Attachment A.

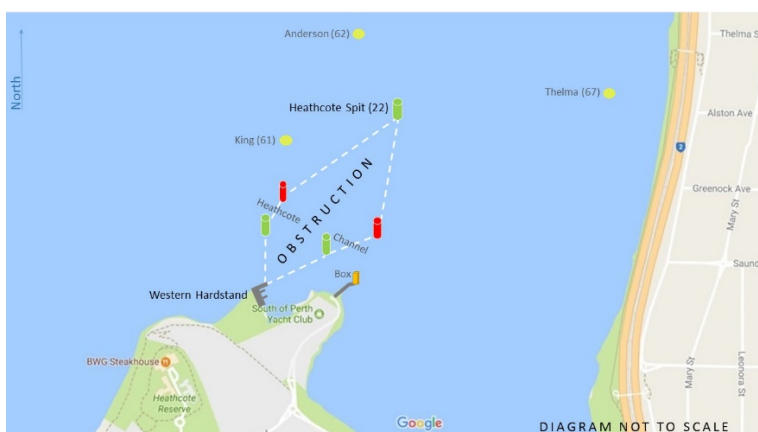
8. COURSES

- 8.1 The diagrams in Attachment B show the courses, including the approximate angles between legs, the order in which marks are to be passed, and the side on which each mark is to be left.
- 8.2 Legs of the course will not be changed after the preparatory signal. This changes RRS 33.

9. MARKS

Mark ID	Description	Colour
Mark 1	Inflatable conical buoy	Yellow
Mark 1a	Inflatable cylindrical buoy	Red
Mark 1b	Inflatable conical buoy	Pink
Mark 1c	Inflatable conical buoy	Orange
Mark 2	Inflatable conical buoy	Yellow
Mark 2a	Inflatable cylindrical buoy	Yellow
Mark 2b	Inflatable conical buoy	Pink
Mark 3	Inflatable conical buoy	Yellow
Mark 3a	Inflatable cylindrical buoy	Yellow
Mark 3b	Inflatable conical buoy	Pink
Mark 4	Inflatable conical buoy	Orange

10. AREAS THAT ARE OBSTRUCTIONS



11. THE START

11.1 Races will be started using RRS 26 amended as follows:

Minutes before Starting Signal	Visual Signal	Sound Signal	Meaning
3	Class flag	One	Warning signal
2	P, U or Black flag	One	Preparatory signal
1	Preparatory flag removed	One long	One minute to start signal
0	Class flag removed	One	Starting signal

11.2 **[SCP][NP]** Boats whose warning signal has not been made shall avoid the starting area during the starting sequence for other races.

11.3 A boat that does not start within 2 minutes after her starting signal will be scored Did Not Start (DNS) without a hearing. This changes RRS A4 & A5.

11.4 The default start order is as follows

- Optimist
- OpenSkiff
- Flying 15s
- 125
- ILCA
- Windsurfer LT
- Viper

Start Order may be adjusted if there is no fleet or fleets are still racing.

11.5 The starting line will be between the staff displaying an orange flag on the Race Committee boat at the starboard end and a black and white chequered inflatable buoy at the port end

12. THE FINISH

The finishing line will be between a staff displaying an orange or blue flag on the Race Committee boat and a black and white chequered inflatable buoy.

13. TIME LIMITS AND TARGET TIMES

	Time Limit	Target Time	Finish Window
F15, Viper640, ICLA classes, 125, 29er	60 minutes	45 minutes	10 minutes
Pelican and all O'pen Skiff, Optimist, Windsurfer LT fleets	45 minutes	30 minutes	10 minutes

- 13.1 Failure to meet the target time will not be grounds for redress. This changes RRS 62.1(a).
- 13.2 Boats failing to finish within 10 minutes after the first boat in their class sails the course and finishes will be scored Did Not Finish (DNF) without a hearing or the Race Officer may indicate current position as their race result. This changes RRS 35, A4 & A5.

14. PROTESTS AND REQUESTS FOR REDRESS

- 14.1 Protest forms are available at the Regatta Office in the Centreboard Clubhouse, OWG office and online via the Event page. Protests and requests for redress or reopening shall be delivered to the On Water Group within the appropriate time limit.
- 14.2 A boat intending to protest shall approach the starboard side of the finishing boat immediately after finishing and advise the finish boat of the sail number of the boat they are protesting.
- 14.3 The protest time limit (PTL) for each class is 60 minutes after the last boat has finished the last race of the day or the Race Committee signals no more racing today, whichever is later.
- 14.4 Notices will be posted no later than 30 minutes after the PTL to inform competitors of hearings in which they are parties or names as witnesses. Hearings will be held in the Protest Room located in the On Water Group Meeting Room in the main clubhouse unless notified otherwise on the official noticeboard.
- 14.5 Notices of protests by the Race Committee or the Protest Committee will be posted to inform boats under RRS 61.1(b).
- 14.6 **[NP]** Breaches of SI's marked **[NP]** will not be grounds for protest by a boat. This changes RRS 60.1(a).

15. SCORING

The low point scoring system, Appendix A shall apply.

- a) 3 races are required to be completed to constitute a series.
- b) Drops are calculated as follows;
- i) When fewer than 4 races have been completed, a boat's series score will be the total of her race scores.
- ii) 1 race drop for every 4 races completed for the fleet.

16. SAFETY REGULATIONS **[NP][SP]**

- 16.1 Sign On shall be available at least 1 hour before the warning signal.
- 16.2 A boat shall complete the 'Sign On & Off' manually via either the sheets provided in the Centreboard clubhouse if launching from SoPYC, or via the Race Committee vessel if launching from alternate locations.
- 16.3 Boats that fail to sign on or off shall receive a **[DNS]** without a hearing for each breach. Boat's coming to the starting area from another club by water shall also sign on / off ashore.

16.4 Retirement from a race: A boat that retires shall notify a Race Committee boat or the Beach Marshall and complete the 'Sign Off' immediately upon returning to shore.

17. REPLACEMENT OF CREW OR EQUIPEMENT [DP]

Substitution of competitors or damaged or lost equipment will not be allowed without prior written approval of the OA. Application for a substitution may be made via sheets provided in the OWG office or online: <http://sopyc.com.au/change-form/>

18. EQUIPMENT AND MEASUREMENT CHECKS

18.1 All competing boats shall conform to the measurement requirements of their respective class rules and have valid measurement certificates prior to this regatta.

18.2 These valid measurement certificates should be brought to the regatta.

18.3 Random measurement checks and inspections may be carried out during the regatta

19. OFFICIAL BOATS

Official boats will display an SoPYC pennant and the words "Safety".

20. SUPPORT / COACH BOATS [DP]

20.1 Support and coach boats shall register online with the OA at:

[Support Boat Registration](#)

20.2 All support and coach boats shall keep clear of the racing areas while boats are racing (except when rendering assistance to a boat in distress).

20.3 Support and coach boats shall remain at least 50 metres outside areas where boats are racing from the time of preparatory signal until all boats have finished or the Race Committee signals a postponement, general recall, or abandonment.

20.4 All support and coach boats are required to have VHF radio and maintain a listening watch on VHF Ch. 69 or any other channel specified by the Race Committee.

20.5 When requested by the Race Committee, support and coach boats shall render assistance as and when required.

21. TRASH DISPOSAL

Trash may be placed aboard support or official boats.

22. RADIO COMMUNICATION

Except in an emergency, a boat that is racing shall not make voice or data transmissions and shall not receive voice or data communication that is not available to all boats.

23. PRIZES

Prizes will be given in accordance with the Notice of Race.

24. DISCLAIMER OF LIABILITY

Competitors participate in the regatta entirely at their own risk. See RRS 3, Decision to Race. The Organising Authority will not accept any liability for material damage or personal injury or death sustained in conjunction with or prior to, during, or after the regatta.

25. INSURANCE

Each participating boat shall be insured with a valid third-party liability insurance with a minimum cover of AUD10 million per incident or the equivalent.

26. MEDIA DISCLAIMER

Competitors agree to grant the Organising Authority the right in perpetuity to make use, use and show, from time to time and at their discretion, any motion pictures, still pictures and live, taped or film television and other reproductions of the athlete during the period of the competition without compensation.

27. FURTHER INFORMATION

For further information, please contact:

On Water Group

South of Perth Yacht Club

Coffee Point, Applecross

Western Australia 6153

Phone: + 61 (08) 9364 5844

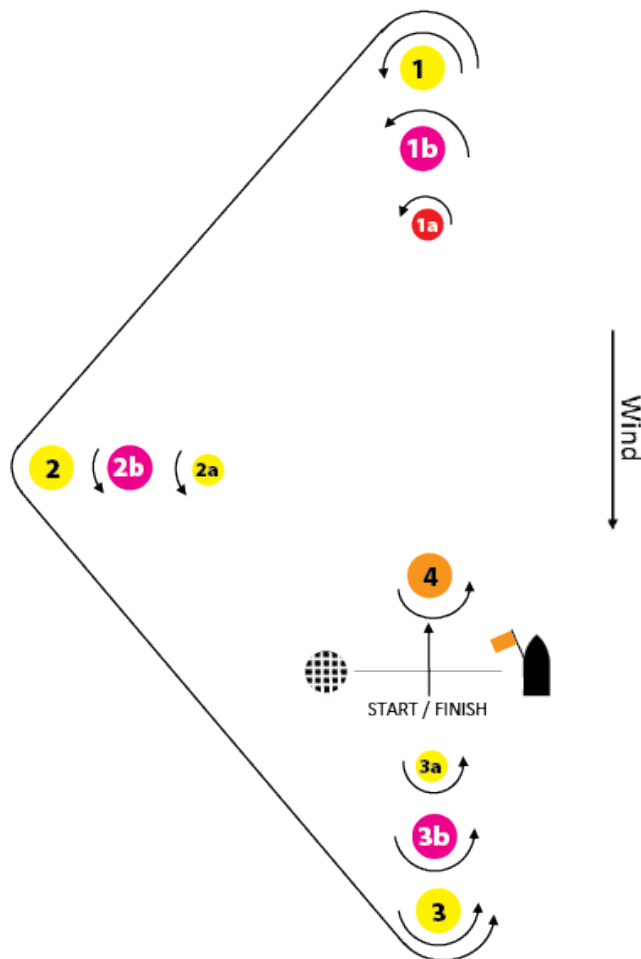
Email: sailingadministrator@sopyc.com.au

ATTACHMENT A RACE AREA



ATTACHMENT B - COURSES

Windward / Leeward / Triangular Courses



NOT TO SCALE

All Marks rounded to port unless otherwise specified

Class	Signal	Course
Pelican	1 	Start – 1a – 2a – 3a – Finish
Pelican	2 	Start – 1a – 4 – 1a - 2a – 3a – Finish
Flying15 / 125	1 	Start – 1– 2 – 3 – 1 – 3 – Finish
Flying15 / 125	2 	Start – 1– 2 – 3 – 1 – 3 – 1 – 3 – Finish
Viper640 / 29er	1 	Start – 1– 2 – 3 – 1 – 3 –Finish
Viper640 / 29er	2 	Start – 1– 2 – 3 – 1 – 3 – 1 – 3 – Finish
Optimist & OpenSkiff	1 	Start – 1a – 4 – 1a – 3a – Finish
Optimist & OpenSkiff	2 	Start – 1a – 4 – 1a – 4 – 1a – 3a - Finish
Laser 4.7/Rad/Std	1 	Start – 1b – 2b – 3b – 1b – 3b – Finish
Laser 4.7/Rad/Std	2 	Start – 1b – 2b – 3b – 1b – 3b – 1b – 3b Finish
Windsurfer LT	1 	Start – 1b – 2b - 3b – Finish
Windsurfer LT	2 	Start – 1b - 2b - 3b – 1b – 3b Finish