



South of Perth Yacht Club

## PROTECTED WATERS

## **EMERGENCY RESPONSE GUIDE**

# **South Perth Yacht Club**

## **Protected Waters**

### **Emergency Response Plan**

---

Personal safety of distressed vessels crew is paramount in all situations.

#### **Boat mishap/sinking/grounding/accidents during club events**

South Perth Yacht Club will provide every assistance in the event of a boat mishap/sinking/grounding, but is not in a position to undertake a professional/technical recovery and this situation is best referred to the boat owner or his insurance company to seek the appropriate person/company to handle the task.

#### **Personal Safety of skipper/owner/crew**

South Perth Yacht Club will provide every available assistance in the event of injured/sick or lost persons evolving from boating mishaps during club events. The Club's assistance will be limited to arranging transport of affected persons to locations where professional response can operate in the shortest possible time.

**In the case of a missing person/yacht, co-ordination will transfer to Western Australia Police / Water Police.**

The Water Police Squad is the State Search and Rescue Authority for Victoria under the National Search and Rescue Agreement between the Federal Government and the various State Governments. The Rescue Co-ordination Centre (RCC) is located at the Water Police Squad Headquarters and co-ordination of Marine SAR operations is conducted by qualified staff at the RCC.

**The closest available rescue boat should respond to injuries to persons involved in any event. If it appears that ambulance attendance will be required, the request for such is to be made via the Rescue Coordinator.**

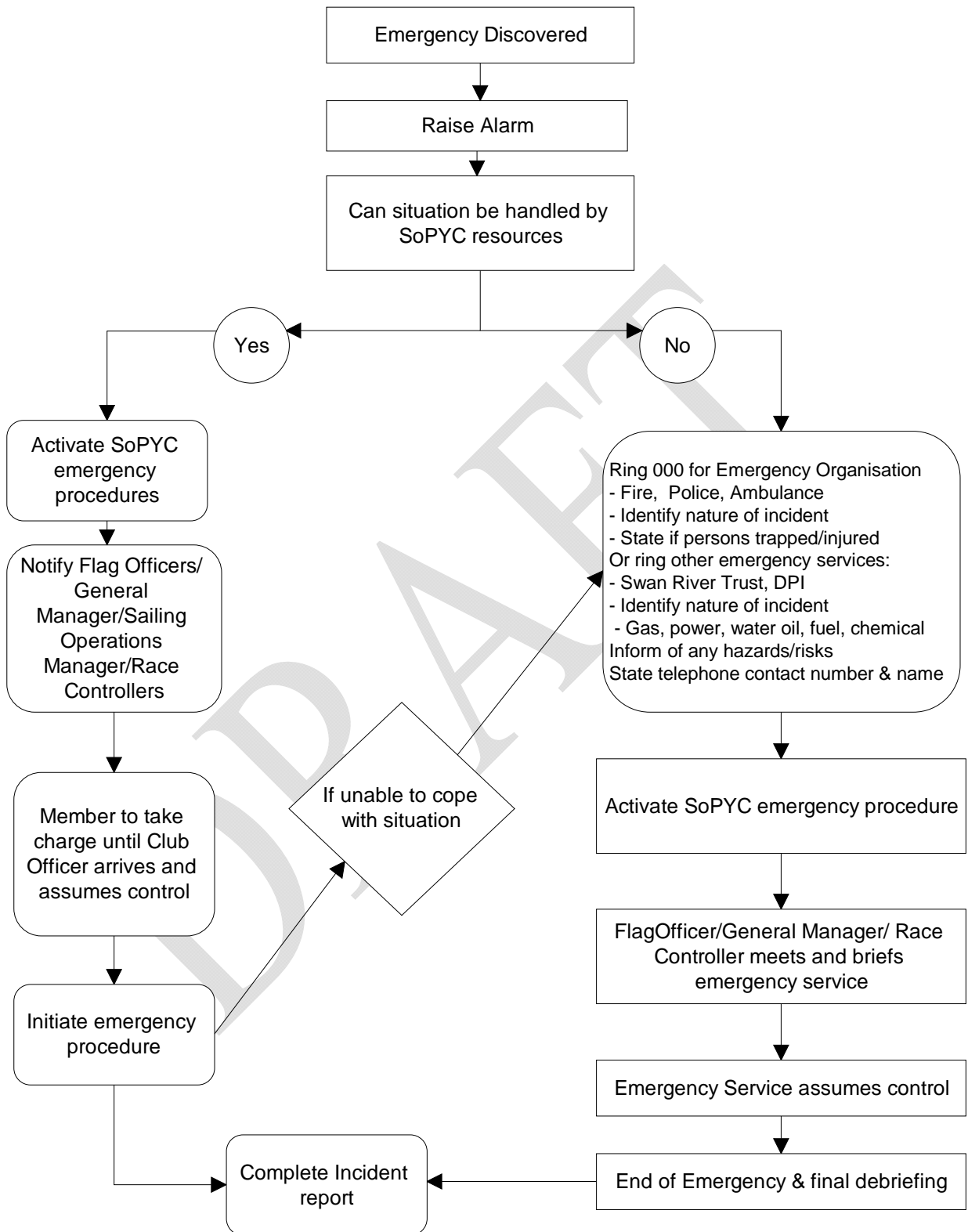
#### **Objective of the Emergency Plan**

To render assistance and available resources for the safety and protection of all personnel and property in a Club event from the start of the event to the finish of the event of an emergency arising within the areas covered by the plan and to minimize damage to the environment

# Emergency Response Plan

<b>Contents</b>	<b>Page</b>
Policy Statement / Introduction	3
Contents	4
Emergency Response Flow Chart	6
Emergency Response Coordination	7
Emergency Response Support	8
On Water Emergency Response Contacts	9
Emergency Contact List	10
Club Management Committee & Captains Contact List	11
Marina Emergency Response	14
• Fire Ashore	14
• Fire Aboard Vessel at Berth	14
• Fire While Refuelling	14
• Fuel Leak While Refuelling	14
• Fuel Leak form Vessel at Berth	15
• Gas Leak / Fire Ashore	15
• Gas / Leak Fire Aboard Vessel at Berth	15
• Hazchem Spill	16
• Sinking or Sunken Vessel at Berth or Mooring	16
On Water Emergency Response	17
• Medical Emergency	17
• Person Overboard	17
• Capsize	17
• Grounding	18
• Collision resulting in Severe Damage (Vessel Disabled)	18
• Sinking Vessel	18
Special Provisions	19
• Saturday Afternoon Keelboat Racing (Summer)	19
• Sunday Afternoon Centreboard Racing	19
• Wednesday Afternoon Keelboat Racing	19
• Winter Frostbite Keelboat Racing	19
• Twilight Racing	20
• Special Events	20
• <del>Ocean Racing</del>	20
• Academy Training	20
• School Groups	20
Appendix 1: Shore Based Evacuation Plan	21
• Evacuation Plan Diagram	21
• Key personnel roles & responsibilities	22
Appendix 2:	23
• First Aid Equipment (Medical Kits, stretcher & wheel chair)	24
• Fire Fighting Equipment (Extinguishers, fire hoses, portable pumps)	24
• Fuel Spill Equipment (Spill response kit & floating containment boom)	24
• Support Boats (Keys, rescue tubes, medical kits & PFDs)	24

## Stages in Emergency Response



## Emergency Response Coordination

---

The control of the South of Perth Yacht Club Marina and leased area is vested in the General Manager, who may from time to time delegate control to additional persons nominated by him.

This Emergency Response Plan deals mainly with a range of emergencies that may occur within the confines of the South of Perth Yacht Club Marina and for vessels engaged in South of Perth Yacht Club events in the surrounding protected waters.

### Hierarchy

General Manager  
On scene coordinator  
etc

## Emergency Response Support

---

Water Police

WA Police

Support Vessels in the immediate area

Fremantle Volunteer Sea Rescue

Department of Planning and Infrastructure

Ambulance

DRAFT

## On Water Emergency Response Contacts List

---

South of Perth Yacht Club ***TO BE UPDATED AFTER AGM ANNUALLY***

Name	Position	Telephone
David Harries	General Manager	0422 418 143
Paul Ward	Commodore	0419 042 420
Mark Nicholas	Vice Commodore	0402 470 806
Tim Dallas	Rear Commodore Regatta	0426 171 240
David Barton	Rear Commodore Centreboard	0411 076 900
Sharon Skinner	Sailing Administrator	0412 745 844

<b>Race Control</b>		<b>0421 704 945</b>
<b>Support Boat</b>	<b>Checkpoint</b>	<b>0412 179 855</b>
<b>Call Sign</b>	<b>VHF Ch 77</b>	<b>VJ6SP</b>

## Emergency Contacts List

---

Emergency Service	Telephone	Alternate Contact Number
Police	000	9222 1555 or 9430 1222
Fire	000	
Ambulance	000	
Hospitals	9481 3333 (Fremantle)	
	Royal Perth 9224 2244	
	Sir Charles Gardner 9346 3333	
	St John of God – Murdoch 9366 1111	
Doctors Open 7 Days	9364 6444	Riseley Medical Group cnr of Canning Hwy & Riseley Street
Doctors Open 7 Days	9364 6633	Reynolds Road 7 Day Medical Centre cnr of Reynolds Road & Canning Hwy.
State Emergency Services	9277 0555	1300 130 039
Poisons Information	13 11 26	
Water Police	9442 8600	
Transport	9239 2400	
Western Power	13 13 54	
Alinta Gas	13 13 52	
Water Corporation	9420 2420	
Swan River Trust	9278 0400	
Fremantle Sea Rescue	9335 1332	



## Duties of Personnel

---

The South Perth Yacht Club Flag Officers, Race Controllers and Staff coordinate the plan in the event of an emergency:

1. Coordinate initial actions deemed necessary. See chart “Stages in emergency response”.
2. Coordinator decides if situation can be handled by Club resources.
3. Coordinator to allocate duties:
  - a) If being handled by Club – delegate person to arrange first-aid equipment. Delegate person to stay in contact with rescue vessel if afloat or to stay with injured person if ashore.
  - b) If being handled by outside agencies – delegate person to contact outside agency e.g. doctor, hospital, ambulance. Delegate also as in a) above.
4. Coordinate all requirements until emergency is over.
5. Complete emergency incident report.

## Support Craft Personnel

---

In case of emergency:

1. Assess if your craft can handle the situation.
2. In any case notify Race Control.
3. Identify your location.
4. Advise if further assistance necessary.
5. Maintain communication with Race Control Coordinator.
6. Advise if outside agencies will be required.
7. Assess where to meet outside agencies to expedite assistance.
8. Coordinate activities with resources available to you.
9. At end of emergency, assist Race Control Coordinator to complete incident report.

## Search and Rescue

---

This area is separated into ON RIVER and OFFSHORE situations.

### ON RIVER

When you receive/sight distressed signal:-

- If no capability to send rescue boat, contact Water Police by Radio call-sign “Coast Radio Perth” or by telephone on 9442 8600.
- If rescue boat dispatched, request assessment of situation:-
  - No immediate danger to crew or craft
  - Crew require assistance by rescue or medical aid
  - Crew OK, craft in danger to founder or becoming a navigation hazard
- Alert other rescue craft to area.
- Notify Emergency Services – Ambulance 000, or Doctor on 9364 6444 or Fremantle Hospital on 9481 3333 as necessary.
- Arrange reception of Rescue craft/rescued crew or casualties.
- Assess ability to retrieve abandoned craft.
- Initiate necessary manpower/resources to retrieve craft.
- Notate sequence of events – time – action taken – results – etc.
- Complete a post-incident report.

### OFFSHORE

#### **Refer to the Offshore Emergency Response Plan**

If a distress call/information received from offshore:

- Assess situation/danger to life, loss of craft, weather conditions, location, number of persons involved, method of contact – 27Mhz, marine HF, mobile phone number, flares etc.
- Notify Water Police on 9442 8600.

# Marina Emergency Response

---

## **SHORE FIRE** (See map for location of fire fighting equipment)

Contact the Fire and Rescue Service and the General Manager with a description of the severity and location of the fire.

Determine the risk of any electrical, fuel, gas or hazchem in the area of the fire and endeavour to minimise further risk.

Control the fire using the available fire fighting equipment until the Fire and Rescue Service arrives to assume control.

Ensure that the safety of personnel is given the highest priority and that property is protected as much as is possible.

## **BOAT FIRE** (See map for location of fire fighting equipment)

### **Fire While Refuelling**

Contact the Fire and Rescue Service and the General Manager with a description of the severity and location of the fire.

Close the fuel supply line valves immediately. See map for location.

Control the fire using the available fire fighting equipment until the Fire and Rescue Service arrives to assume control.

Move any other vessels alongside to a safe location.

### **Fire Aboard Vessel Boat in Pen or Hardstanding Bay**

Contact the Fire and Rescue Service and the General Manager with a description of the severity and location of the fire.

It may be possible to move the vessel to a safer location. This will need to be assessed and action taken if it is safe to do so.

Control the fire using the available fire fighting equipment until the Fire and Rescue Service arrives to assume control.

Determine whether it is safe to move any neighbouring vessels to a safer location.

In the event that LP Gas cylinders are seen or known to be on board the vessel and where these cannot be removed, the area should be evacuated to await the arrival of the Fire and Rescue Service.

## Marina Emergency Response

---

### **FUEL LEAK – WHILE REFUELLING - FUEL JETTY**

Contact the General Manager and advise him of the extent of the leak.

In the case of a diesel fuel spillage, use the spill kit located on the Fuel Jetty to try and contain the spill. If the spill cannot be contained, notify Perth Petroleum.

Notify the Swan River Trust and Water Police.

In the case of a petrol spillage, evacuate the area of all personnel and await the arrival of the Fire and Rescue Service

### **FUEL LEAK – FROM VESSEL AT BERTH**

Contact the General Manager and where possible the boat owner to advise of the extent of the leak.

In the case of a diesel fuel spillage, use the spill kit located on the Fuel Jetty to try and contain the spill. If the spill cannot be contained, notify Perth Petroleum.

Notify the Swan River Trust and Water Police.

In the case of a petrol spillage, evacuate the area of all personnel and await the arrival of the Fire and Rescue Service

### **GAS LEAK / FIRE ASHORE**

*Need to look at onshore gas facilities*

### **GAS LEAK / FIRE ABOARD VESSEL AT BERTH**

This is most likely to be from an LP gas cylinder and is a potential fire hazard. Advise all personnel in the area to stop all engines and electrical equipment and vacate the immediate area.

If the cylinder can be removed from the boat, place it at least 25 metres from any source of ignition and allow it to empty. It should then be returned to the supplier.

Ensure the boat concerned is allowed to ventilate until all gas has been cleared.

# Marina Emergency Response

---

## **TOXIC / HAZCHEM SPILLS**

Contact the General Manager and advise him of the nature and extent of the spill. Where possible he needs to be advised of the nature of the chemical and any downwind hazard posed by any fire, smoke or fumes.

If in the view of the General Manager, there is a serious hazard, the Fire and Rescue Services should be called.

Evacuate personnel from the area and ensure that the spill is not washed into drains or the river.

In the event that the spill has entered a drain, every effort must be made to ensure that the spill does not enter the river by sealing off the drain exit with sand or earth.

Any spillage which reaches either Canning or Swan River or marine environment should be reported to the Department of Planning and Infrastructure.

## **SINKING / SUNKEN VESSEL AT BERTH OR MOORING**

Contact the General Manager and where possible the boat owner.

Contact the Boat Lift Driver in order that the boat may be lifted as soon as possible.

Initiate pumping out using the mobile pumping equipment and if possible the on board bilge pumps.

In the vessel has already sunk or is clearly going to sink, arrangements should be made to use the fuel spill kit located on the fuelling jetty to contain the spill within the pen or immediate area.

If the boat sinks outside a pen, its position must be marked using a buoy from one of the safety boats or the Regatta Store to avoid it becoming a hazard to other vessels.

## **On Water Emergency Response**

---

### **MEDICAL EMERGENCY**

**(Urgency call PAN PAN)**

First Aid Kits are situated as shown on the location map.

As a general rule, if in any doubt an ambulance should be called or the injured transported immediately to Fremantle or Royal Perth Hospital depending on location and traffic.

### **PERSON OVERBOARD**

**(Urgency call PAN PAN)**

### **CAPSIZE**

**(Urgency call PAN PAN)**

### **GROUNDING**

### **COLLISION RESULTING IN SEVERE DAMAGE (VESSEL DISABLED)**

### **SINKING VESSEL**

# On Water Emergency Response

---

## **RIVER RACING / CRUISING**

### **Saturdays (Summer Season)**

In the event of any on water incident, the Sailing Administrator should be contacted by telephone or radio (Channel 72 or 29.94 MHz). Full contact details are on the inside cover of the "Red Book" Appendix "D" Club Emergency mobile number 0421 704 945.

Contact may also be made with the Safety Boat on either of the frequencies shown above. Channel 72 is also monitored by FVSR and the Water Police.

The Safety Boat Crew or Sailing Administrator can if required call an ambulance, which will normally be directed to the Fuel Jetty or the SoPYC main carpark depending upon the location of the incident.

The Sailing Administrator will subsequently make a report to the General Manager.

### **Saturdays (Winter Season)**

In the event of an on water incident, contact should be made in the first instance with the Start Boat, Start Box or Host Club and if their services are required, FVSR either by telephone or radio.

Subsequently the General Manager and Captain Power must be informed in writing using a copy of the Report Form contained in this document.

### **Wednesday Races (All Year)**

All on water incidents are to be reported by telephone to the Sailing Administrator who will take the appropriate action to inform the necessary authorities.

Direct contact may also be made with FVSR and the Water Police.

The Sailing Administrator will subsequently report all incidents to the General Manager.

### **Winter Frostbite Keelboat Racing**

In the event of an on water incident, contact should be made in the first instance with the Start Boat, Start Box or Host Club and if their services are required, FVSR either by telephone or radio.



# **On Water Emergency Response**

---

Subsequently the General Manager and Captain Power must be informed in writing using a copy of the Report Form contained in this document.

## **Twilights & Night Races**

During Twilights and Night Races, the office of the Sailing Administrator will be manned in accordance with the Sailing Instructions. A Support Boat will be deployed.

All on water incidents are to be reported by telephone or radio to the Sailing Administrator's Office and the Safety Boat.

Channel 72 is monitored by the Club, FVSR and the Water Police.

All boats are required to carry safety equipment in accordance with the Sailing Instructions.

## **Special Events**

### **Academy Training**

### **School Groups**

- **Response in conjunction with Teacher / Supervisor**

## **OCEAN RACING / CRUISING**

- **See Offshore Emergency Response Plan**

(Advice from YAWA Safety Committee)

## **Appendix 1: Shore Based Evacuation Plan**

- **Evacuation Plan Diagram and Mustering Points**
- **Key Personnel roles and responsibilities**

## **Appendix 2:**

- **First Aid Equipment Location (Medical kits, stretcher & wheel chair)**
- **Fire Fighting Equipment Location (Extinguishers, fire hoses, portable pumps)**
- **Fuel Spill Equipment Location (Spill response kit & floating containment boom)**
- **Support boats location (Keys, rescue tubes, medical kits & PFDs)**

## Emergency Evacuation Assembly & Mustering Area



## Key Personnel Roles & Responsibilities

---

### **General Manager / Duty Officer**

To coordinate or in the alternative to delegate authority to coordinate the emergency response, including if and when to call on outside assistance, such as the State Hazard Management Authority (WA Police), Ambulance, FESA, SES, etc.

### **Race Control / Start Box**

May be the delegated in the absence of the General Manager and/or Duty Officer.

DRAFT

## First Aid Equipment Off Water Location Diagram

- First Aid Kits
- Stretcher
- Wheel Chair
- Defibrillator
- Oxy-Pro Advanced Resuscitation Equipment

DRAFT

## Fire Fighting Equipment Off Water Location Diagram

- Fire Extinguishers
- Fire Hydrants
- Fire Blankets

DRAFT

## Fuel Spill Equipment Off Water Location Diagram

- Spill Kit
- Containment Boom

DRAFT

## Support Boats Equipment Off Water Location Diagram

DRAFT

## Other Information

---

DRAFT