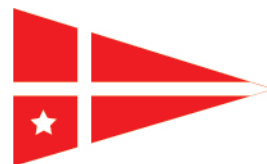
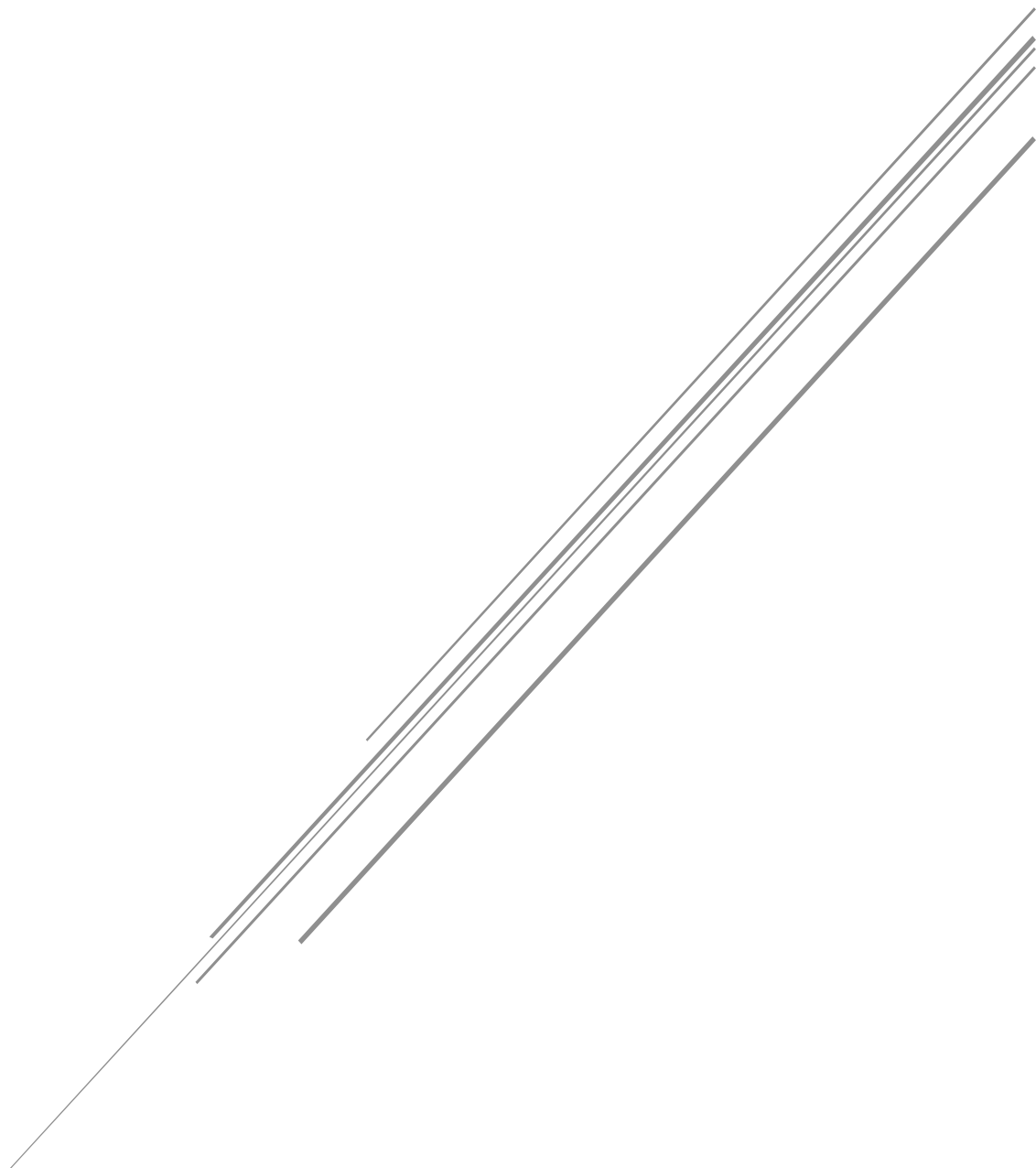


MIDWEEK SERIES



Sailing Instructions 2018-2019



SOUTH of PERTH YACHT CLUB
Coffee Point, APPLECROSS

SoPYC Race Control VHF Ch.77 Mobile 0412 704 945

AMENDMENTS

| NTC No. | Posted Date | Description of Amendment |
|----------|-------------|-----------------------------|
| 19_19/18 | 02 Apr 19 | C Fleet & H28 Course change |
| 20_19/18 | 06 Apr 19 | C Fleet Pursuit races |
| | | |
| | | |
| | | |
| | | |
| | | |



SOUTH OF PERTH YACHT CLUB

Organising Authority

MIDWEEK SERIES

SAILING INSTRUCTIONS 2018/19

1. RULES

- 1.1. Races will be governed by the rules as defined in:
 - a) *The Racing Rules of Sailing (RRS).*
 - b) *The Prescriptions of Australian Sailing (AS) including the Special Regulations.*
 - c) *Appendix T – Arbitration shall apply.*
- 1.2. Racing Rules will be changed as follows:

RRS 44.1 is changed so that the Two-Turns Penalty is replaced by the One-Turn Penalty for all races.
- 1.3. **Sails**
 - a) Boats may only carry normal working sails tacked in the normal position for working to windward. Boats shall not carry additional headsails, spinnakers or the like.
 - b) A sail may be attached to a bowsprit or poled out. This changes RRS 50.3.

2. NOTICES TO COMPETITORS

Notices to Competitors (NTC) will be posted on the official noticeboard located in the foyer of the main Clubhouse. The race office is the On Water Group (OWG) office.

3. CHANGES TO SAILING INSTRUCTIONS

Any change to the Sailing Instructions (SIs) will be posted not less than 2 hours before the scheduled warning signal on the day it will take effect, except that any change to the schedule of races will be posted by 1800 on the day before it will take effect.

4. SIGNALS MADE ASHORE





- 4.1 Signals made ashore will be displayed from the signal mast on the main clubhouse north-east lawn.
- 4.2 Signals made at the start box are deemed to be made afloat.
- 4.3 When flag 'AP' is displayed ashore, '1 minute' is replaced with 'not less than 45 minutes' in the race signal 'AP'.

5. SCHEDULE OF RACES

- 5.1 The schedule of races is published in the SoPYC Red Book 2018-2019 and at <https://sopyc.com.au/news-events/events-calendar/>

- 5.2 To alert boats that a race or sequence of races will begin soon, the orange starting line flag will be displayed with one sound at least 1 minute before a warning signal is made.

6. CLASS AND DIVISION FLAGS

| | | | | | |
|----------------|-----------------|---|------------------|-----------------|---|
| A Fleet | Naval Numeral 1 |  | C Fleet | Naval Numeral 3 |  |
| B Fleet | Naval Numeral 2 |  | H28 Class | Naval Numeral 7 |  |

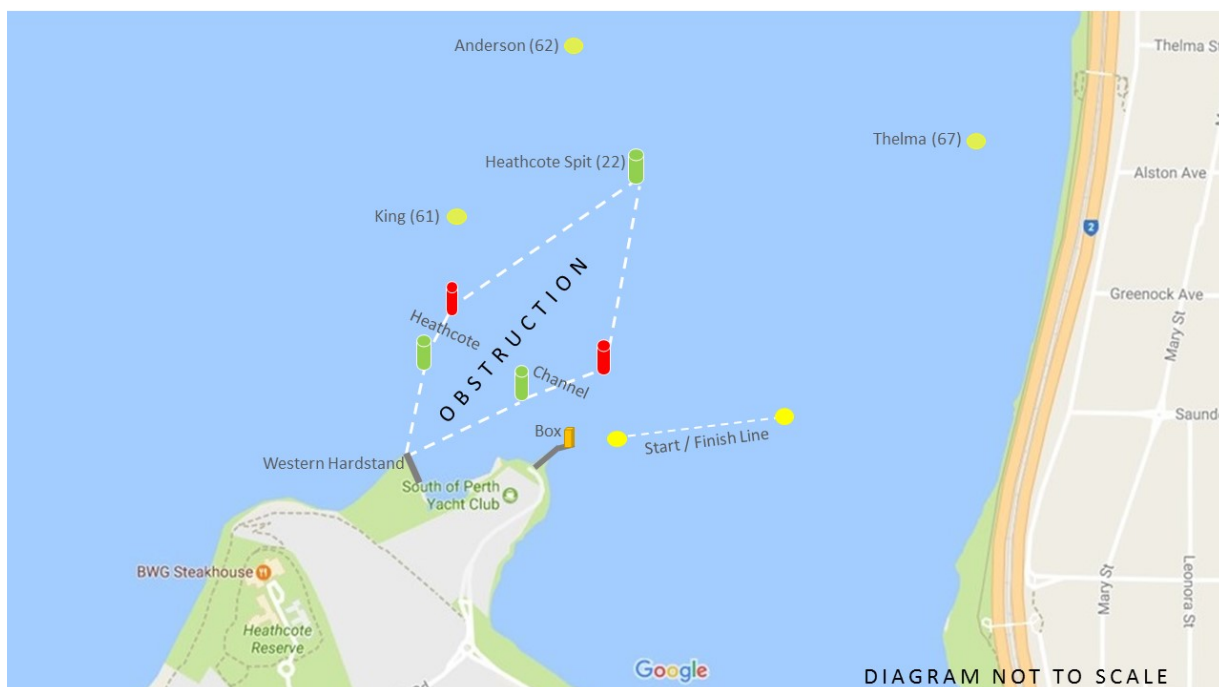
- 6.1 A keelboat's class/division flag shall be displayed from the backstay or mainsail leech when racing.
- 6.2 The flag shall be removed when no longer racing.

7. CLUB COURSES AND MARKS

- 7.1 The club courses for each fleet are available from the racks located in the foyer of the main clubhouse and available online at:
<https://sopyc.com.au/race-documents/>
- 7.2 Marks for club courses will be fixed marks as shown in the Midweek club course sheets.
- 7.3 If a mark is missing and Flag 'M' is not in position, boats shall round in the marks usual position. This changes RRS 34.
- 7.4 The course to be sailed will be designated by an international numeral pennant corresponding to that course number, displayed below the division or class flag.

8. AREAS THAT ARE OBSTRUCTIONS

- While racing, the area and the imaginary lines listed below are designated obstructions that boats shall not enter, or cross, as applicable:
- The area encompassing the northern point of the western hardstand, Heathcote Channel and Heathcote Spit (22) as shown in the diagram on the following page.
 - An imaginary line between Bricklanding buoys (33A) and (33B),
 - An imaginary line between Smith buoy (35A) and Lucky Bay buoy (35B).
 - All navigation posts carrying top marks (except Outer Dolphin (17), Foam Spit (18) and Deepwater Spit (37)) shall not rank as marks but shall rank as obstructions for the purpose of RRS 19.
 - While racing, all navigation posts carrying top marks, except Outer Dolphin (17), Foam Spit (18) and Deepwater Spit (37), shall be passed on their correct navigational side.



Western Hardstand to Heathcote Spit (22) Obstruction

9. THE START

9.1 The Box Start/Finish Line will be between a staff displaying an orange flag on the Start Box and the outermost of the two yellow pyramid buoys. The inner yellow buoy will mark the extent but not necessarily the position of the line and shall be left on the same hand as the Start Box.

9.2 **Box Starts**

a) When a race is scheduled or signalled to start at the Box, boats shall start in a northerly direction to Sampson Spit (19) to Port.



b) If flag 'V' is displayed no later than the 'on station signal', then boats shall start in a southerly direction and leave additional marks, Martin Buoy (69), Weaver Buoy (68), Outer Start Line Buoy and Sampson Spit (19) all to Port, before continuing on to their normal signalled course.

9.3 **General Recall**

When a General Recall is signalled, the warning signal for a new start for the first recalled fleet will be made at the starting signal of the last fleet in the original sequence. New starts for other recalled fleets will follow in order thereafter. A General Recall signal will be displayed for 1 minute. This changes RRS 29.2 and race signal, 'First Substitute'.



9.4 **Late Starter**

A boat that does not start within 5 minutes after her starting signal will be scored Did Not Start (DNS) without a hearing. This changes RRS A4 & A5.

9.5 **Shortening the Course**

a) **Before the start** - The Race Committee may shorten a course before the starting signal by flying Flag 'S' over the relevant fleet flag(s) no later than the warning signal. The marks prefixed * on the Midweek Club Course sheets shall be omitted. This changes RRS 32.2



b) After the start

- i) The Race Committee may shorten a course after the starting signal by flying Flag 'S' over the relevant fleet flag(s) from the Box. The marks prefixed * on the Midweek Series Club Course sheets shall be omitted. This changes RRS 32.2
- ii) The Race Committee may also advise over the VHF radio channel that a course has been shortened for specific fleets. Failure to hear any radio calls shall not be grounds for redress. **[NP]**

10. PENALTY SYSTEM

- 10.1 RRS 44.1 is changed so that the Two-Turns Penalty is replaced by the One-Turn Penalty for all races.
- 10.2 Appendix T – Arbitration shall apply.
[DP] Discretionary Penalty – the penalty for a breach of this rule may at the discretion of the Protest Committee, be less than disqualification.
[NP] Breaches of the SI's marked **[NP]** will not be grounds for protest by a boat. This changes RRS 60.1 (a).

11. TIME LIMIT

- 11.1 The time limit for the Midweek Series is 1715 hrs.
- 11.2 If no boat sails the course and finishes within the time limit, then the race will be abandoned.

12. PROTESTS AND REQUESTS FOR REDRESS

- 12.1 Protest forms are available outside the On Water Group office in the main clubhouse foyer. Protests and requests for redress or reopening shall be delivered to the On Water Group office within the appropriate time limit.
- 12.2 For all fleets, the protest time limit (PTL) is one hour after the last boat has finished.
- 12.3 Notices will be posted no later than 30 minutes after the PTL to inform competitors of hearings in which they are parties or named as witnesses. Hearings will be held in the On Water Group Meeting Room at the time posted.

13. SCORING – refer NoR

14. SAFETY REGULATIONS [NP] [DP]

- 14.1 South of Perth Race Control monitors VHF ch.16 and the designated race frequency (usually VHF ch. 77).
- 14.2 Operable marine VHF radios shall be carried, which may be permanently installed or be waterproof handheld and shall be turned on whilst racing.
- 14.3 The call sign for South of Perth Yacht Club is 'South of Perth Race Control'.
- 14.4 A boat that retires from a race shall notify the Race Committee via VHF radio as soon as possible or fill in the Retirement Record located in the OWG office.
- 14.5 No anchors shall be carried on deck forward of the stem or with any part protruding outboard.
- 14.6 All boats should have, in addition to the Helmsperson, at least one other person competent to handle the boat in an emergency.

15. CHANGE OF HELMSPERSON – Refer NoR

16. OFFICIAL BOATS [NP]

All official boats will display the words 'Safety' and a SoPYC burgee. 

17. RADIO COMMUNICATION [DP][NP]

Except in an emergency, a boat that is racing shall not make voice or data transmissions and shall not receive voice or data communication that is not available to all boats.

18. PRIZES – Refer NoR

19. DISCLAIMER OF LIABILITY

Competitors participate entirely at their own risk. See Rule 4, Decision to Race which states: "The responsibility for a boat's decision to participate in a race or to continue racing is hers alone."

The Organising Authority will not accept any liability for material damage or personal injury or death sustained prior to, during, or after any event. No boat shall start in any race unless it has ticked the Declaration forming part of the online sailing nomination form.

20. INSURANCE

Each participating boat shall be insured with valid third-party liability insurance with a minimum cover of AUD \$10 million per incident or equivalent.



Welcoming | People | Sailing | Inspiration