



South of Perth Yacht Club

OFF THE BEACH CLUB COURSES RACE
SUPPLEMENTARY SAILING INSTRUCTIONS
07 April 2019

1. RULES

Races will be governed by the Racing Rules of Sailing and the South of Perth Yacht Club Off The Beach Sailing Instructions 2018-19 and as modified by these Supplementary Sailing Instructions.

2. STARTING

- 2.1 1st warning signal is 1325.
- 2.2 All boats shall start in a northerly direction.

3. COURSES

- 3.1 Refer to Off The Beach Club Course sheet attached to these SSIs.
- 3.2 The course to be sailed will be designated by an international numeral pennant corresponding to that course number, displayed below the relevant class flag.
- 3.3 An orange flag displayed at the SoPYC start line will identify that the line is in use and a boat shall not pass in either direction through it except between its warning signal and starting or when finishing.

4. MARKS

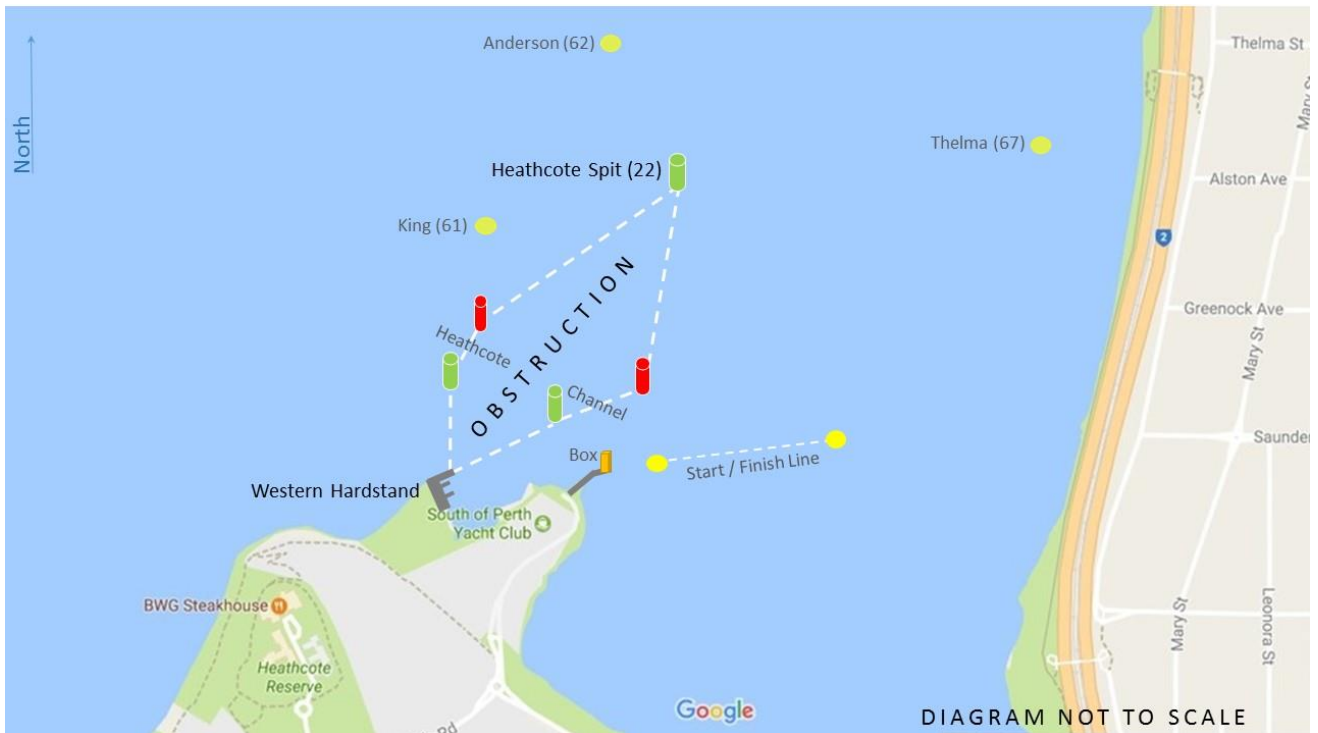
- 4.1 Fixed marks are as shown in 'Guide to Swan River Marks' attached to these SSIs.
- 4.2 The Box Start/Finish Line will be between a staff displaying an orange flag on the Start Box and the outermost of two yellow pyramid buoys. The inner yellow buoy will mark the extent but not necessarily the position of the line and shall be left on the same hand as the Start Box.
- 4.3 If a mark is missing and Flag 'M' is not in position, boats shall round in the marks usual position. This changes RRS 34.

5. SHORTENING THE COURSE

- 5.1 The Race Committee may shorten a course before the Starting Signal by flying the Flag 'S' with the course flag no later than the warning signal. The marks prefixed * in the Off The Beach Club Course sheet shall be omitted. This changes RRS 32.2.
- 5.2 The Race Committee may shorten a course after the Starting Signal by flying Flag 'S' with the SoPYC burgee adjacent to a mark of the course. The marks prefixed * in the course description shall be omitted and boats shall then continue to the finish. No sound signal is required. This changes RRS32.2.
- 5.3 The Race Committee may shorten the course in accordance with RRS 32.2 – the Race Committee vessel will fly the shortened course flag, the relevant fleet flag(s) with both the orange (on station) flag and the Blue Finish flag.

6. OBSTRUCTIONS

While racing, the area shown below is designated an obstruction that boats shall not enter, or cross.



7. TIME LIMIT

The time limit is 1700 for all classes.

8. PRIZES

Pennants will be awarded for 1st, 2nd 3rd and fastest in each class across the line.

OFF THE BEACH CLUB COURSES

ALL CLASSES

Course 1 (SW or NE)

Start Box
 Sampson Spit (19) Port
 Robins Buoy (59) Starboard
 Dolphin East Buoy (42b) Starboard
 King Buoy (61) Starboard
 Robins Buoy (59) Starboard
 Como Buoy (65) Starboard
 *Robins Buoy (59) Starboard
 *Dolphin East Buoy (42b) Starboard
 *Como Buoy (65) Starboard
 Finish Box

Full Course Length: 07.80nm
 Shortened Course Length: 05.30nm

Course 3 (NW or SE)

Start Box
 Sampson Spit (19) Port
 Dinghy Buoy (79) Starboard
 Addison Buoy (63) Starboard
 Foam Buoy (55) Starboard
 Dinghy Buoy (79) Starboard
 Foam Dinghy (55) Starboard
 Addison Buoy (63) Starboard
 *Foam Buoy (55) Starboard
 *Como Buoy (65) Starboard
 Finish Box

Full Course Length: 06.20nm
 Shortened Course Length: 05.70nm

Course 2 (E or W))

Start Box
 Sampson Spit (19) Port
 King Buoy (61) Starboard
 Robins Buoy (59) Starboard
 Dolphin East Buoy (42b) Starboard
 King Buoy (61) Starboard
 Dolphin East Buoy (42b) Starboard
 Como Buoy (65) Starboard
 *King Buoy (61) Starboard
 *Robins Buoy (59) Starboard
 *Dolphin East Buoy (42b) Starboard
 *Como Buoy (65) Starboard
 Finish Box

Full Course Length: 07.90nm
 Shortened Course Length: 05.40nm

Course 4 (Alternate SW)

Start Box
 Sampson Spit (19) Port
 Robins Buoy (59) Starboard
 Dolphin East Buoy (42b) Starboard
 Foam Buoy (55) Starboard
 Robins Buoy (59) Starboard
 Foam Buoy (55) Starboard
 Robins Buoy (59) Starboard
 Dolphin East Buoy (42b) Starboard
 Como Buoy (55) Starboard
 *Robins Buoy (59) Starboard
 *Dolphin East Buoy (42b) Starboard
 *Como Buoy (65) Starboard
 Finish Box

Full Course Length: 09.00nm
 Shortened Course Length: 06.70nm

Race Signals



Flag AP
 Races not started are postponed.



Flag M
 Missing Mark
 SSI 4.3



Flag S
 Shortening
 the Course
 SSI 5.0



Flag X
 Individual
 recall

Course Signals



Numeral Pennant 1
 Course 1



Numeral Pennant 2
 Course 2



Numeral Pennant 3
 Course 3



Numeral Pennant 4
 Course 4

Note: Marks prefixed with (*) in the course description shall be omitted. Refer SSI 5.0 Shortening The Course

South of Perth Race Control: VHF ch.77 or 0412 704 945