



South Of Perth Yacht Club  
**FARR 9.2 ASSOCIATION METRO RACE 3**  
SUPPLEMENTARY SAILING INSTRUCTIONS  
Saturday 24 November 2018

## 1. RULES

- 1.1 The Organising Authority (OA) is South of Perth Yacht Club (Inc.)
- 1.2 Races will be governed by the rules as defined in:
- The Racing Rules of Sailing (RRS)
  - The Prescriptions of Australian Sailing (AS) including the Special Regulations
  - The class rules of the Farr 9.2 Association
  - The South of Perth Yacht Club Keelboat Sailing Instructions 2018 – 2019
  - And as modified by these Supplementary Sailing Instructions

## 2. SCHEDULE OF EVENTS

1 <sup>st</sup> Warning	Fleets	Event Description	Start
1325	Farr 9.2 Assn	Metro Race 3	MWE
	Division 2	Saturday Summer Series / Invitation Series	MWE
	SS27	Saturday Summer Series/State Championship	MWE
	H28	Saturday Summer Series	MWE
	SS22	Saturday Summer Series	MWE
	Viper 640	Saturday Summer Series	MWE

## 3. CLASS FLAG

The Farr 9.2 Association class flag will be the yellow Farr 9.2 insignia on a black background.

## 4. NOTICE TO COMPETITORS

Notices to competitors will be posted on the race noticeboard located in the foyer of the Clubhouse. The race office is in the On Water Group office (OWG).

## 5. SIGNALS MADE ASHORE

Signals made ashore will be displayed from the signal mast on the clubhouse north-east lawn.

## 6. CLUB COURSES

Refer Saturday Summer Series Courses - Division 2.  
(Attached to these SSIs)

## 7. DAY BUOY

- 7.1 **Flag 'Q'** displayed at the warning signal indicates a Day Buoy has been laid to windward of the start line.
- 7.2 **Flag 'Q'** with a red Port flag means "after starting, boats shall round the Blue Day Buoy and then round the Yellow Clearance Buoy, leaving both to port, before continuing to the first mark of the course. A green starboard flag has the same meaning except both buoys shall be left to starboard.



Flag Q



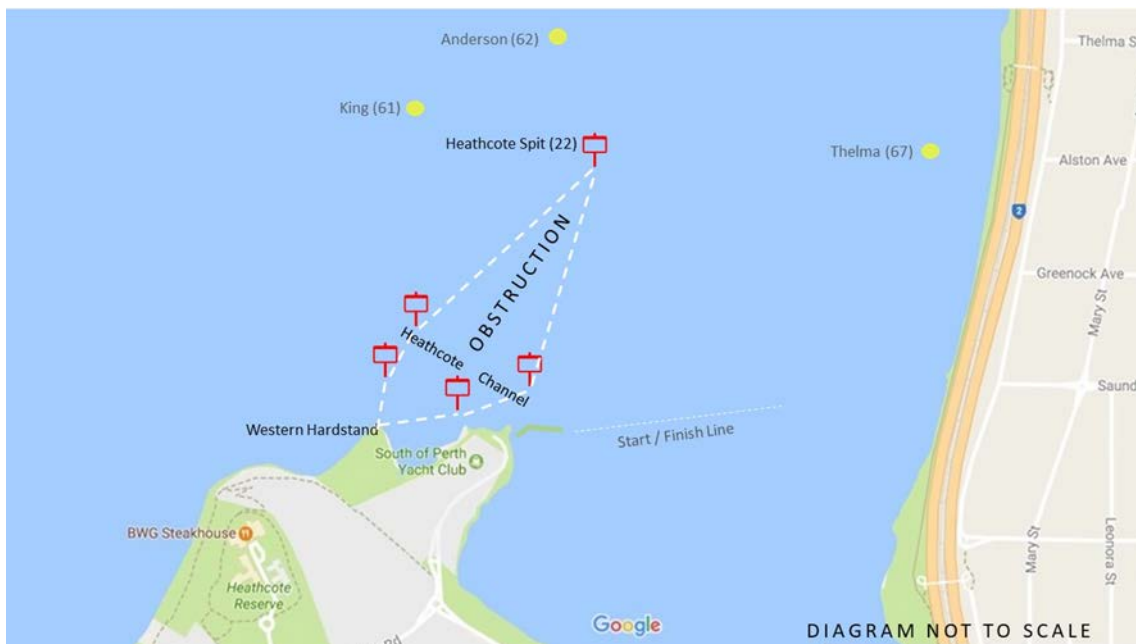
Port Flag



Starboard Flag

## 8. OBSTRUCTIONS

The area encompassing the northern point of the western hardstand, Heathcote Channel and Heathcote Spit (22) as shown in the diagram below:



Western Hardstand to Heathcote Spit (22) Obstruction

## 9. TIME LIMIT

The time limit is 1730

## 10. PRIZES

Pennants will be awarded for 1<sup>st</sup>, 2<sup>nd</sup> & 3<sup>rd</sup> place based on corrected time & Fastest.



Welcoming | People | Sailing | Inspiration

# SATURDAY SUMMER SERIES COURSES – Div 2

## Course 1 (SW or NE)

Start, vicinity of Como Buoy (65)	
Bricklanding Buoys (33A, 33B)	Starboard
Dolphin West Buoy (42A)	Starboard
Bricklanding Buoys (33A, 33B)	Starboard
Bishop Buoy (74)	Port
North Point Walter Buoy (26A)	Port
Miller Buoy (28)	Port
Bond Spit (38)	Port
Dolphin East Buoy (42B)	Starboard
Como Buoy (65)	Starboard
*Robins Buoy (59)	Starboard
*Dolphin East Buoy (42B)	Starboard
*Como Buoy (65)	Starboard
Finish	Box

Full Course Length: 14.70nm  
Shortened Course Length: 12.12nm

## Course 3 (NW or SE)

Start, vicinity of Como Buoy (65)	
Hallmark Buoy (41A)	Port
Frenchmans Buoy (60)	Starboard
Bartlett Buoy (39)	Starboard
Foam Buoy (55)	Starboard
King Buoy (61)	Starboard
Bartlett Buoy (39)	Starboard
<i>Foam Spit to be passed on the deepwater side</i>	
Addison Buoy (63)	Starboard
Como Buoy (65)	Starboard
*Robins Buoy (59)	Starboard
*Dolphin East Buoy (42B)	Starboard
*Como Buoy (65)	Starboard
Finish	Box

Full Course Length: 11.30nm  
Shortened Course Length: 09.60nm

## Course 2 (E - W)

Start, vicinity of Foam Buoy (55)	
Smith Buoy (35A)	Port
Lucky Bay Buoy (35B)	Port
Squadron Buoy (37)	Port
Dolphin East Buoy (42B)	Starboard
<i>Foam Spit to be passed on the deepwater side</i>	
Addison Buoy (63)	Starboard
Deepwater Spit (37)	Starboard
Dolphin East Buoy (42B)	Starboard
Como Buoy (65)	Starboard
*Robins Buoy (59)	Starboard
*Dolphin East Buoy (42B)	Starboard
*Como Buoy (65)	Starboard
Finish	Box

Full Course Length: 11.40nm  
Shortened Course Length: 08.90nm

## Course 4 (Alternative SW)

Start, vicinity of Como Buoy (65)	
Bricklanding Buoys (33A, 33B)	Starboard
Dolphin West Buoy (42A)	Starboard
Smith Buoy (35A)	Port
Lucky Bay Buoy (35B)	Port
Squadron Buoy (37)	Port
Dolphin East Buoy (42B)	Starboard
Como Buoy (65)	Starboard
*Robins Buoy (59)	Starboard
*Dolphin East Buoy (42B)	Starboard
*Como Buoy (65)	Starboard
Finish	Box

Full Course Length: 12.10nm  
Shortened Course Length: 09.60nm

### Race Signals



Flag AP  
Races not started are postponed.



Flag M  
Missing Mark  
SI 7.4



Flag Q  
Day Buoy  
SI 7.3



Flag R  
Relocation to Box  
SI 9.4



Flag S  
Shortening the Course  
SI 9.8



Flag V  
Southerly Box Start  
SI 9.5



Flag X  
Individual recall



Flag Y  
Wear a pfd  
(see RRS 40).



1<sup>st</sup> Sub General  
Recall SI 9.6

### Course Signals



Numeral Pennant 1  
Course 1



Numeral Pennant 2  
Course 2



Numeral Pennant 3  
Course 3



Numeral Pennant 4  
Course 4

Note: Marks prefixed with (\*) in the course description shall be omitted. Refer SI 9.8 Shortening The Course