



# 2024 FRANK SAMPSON MEMORIAL PURSUIT RACE SUPPLEMENTARY SAILING INSTRUCTIONS

SATURDAY 21 DECEMBER 2024

**South of Perth Yacht Club**  
**(OA – Organising Authority)**

## 1. RULES

1.1 Races will be governed by the 2021-2024 Racing Rules of Sailing, the South of Perth Yacht Club Saturday Sailing Instructions 2024/25 and as modified by these Supplementary Sailing Instructions.

## 2. ELIGIBILITY

- 2.1 All SoPYC keelboats nominated in accordance with Notice of Race (NoR) 2024/25.
- 2.2 Visiting boats and fleets must register in accordance with the NoR 2024/25 and utilise the '**Invited Fleets**' registration option.
- 2.3 Visiting boats are eligible to compete for pennants only.

## 3. CLASS FLAGS



Combined Division - Flag 'G'

- 3.1 All Keelboats are sailing as a Combined Division. The warning signal class flag will be Code Flag 'G'
- 3.2 All competitors shall fly their normal divisional flag, eg. Division 1, SS27, etc...

## 4. STARTING

- 4.1 The race is scheduled to start at the 'Box'.
- 4.2 Combined Division Keelboat pursuit 1<sup>st</sup> warning signal at **1325**.
- 4.3 Boats shall start in accordance with Saturday SI 12.7 – **Pursuit Starts**.

## 5. THE COURSE – All Fleets

Start	Box
Sampson Spit (19)	Port
Bricklanding Buoys (33a, 33b)	Starboard
Dolphin West Buoy (42a)	Starboard
*Smith Buoy (35a)	Port
*Lucky Bay Buoy (35b)	Port
*Squadron Buoy (37)	Port
*Deepwater Spit (37)	Starboard
Como Buoy (65)	Starboard
Finish	Box
Full Course Length:	10.10nm

- 5.1 The fleet will start in a northerly direction.
- 5.2 No course flags will be flown.

## 6. SHORTENING THE COURSE

6.1 **Before the start** – The RC may shorten a course before the starting signal by flying Flag 'S' over the fleet flag no later than the warning signal. The marks prefixed \* on SSI 5 The Course, shall be omitted. This changes RRS32.

6.2 **After the start:**

- a) The RC may shorten the course for a fleet by flying **Flag 'S'** over the fleet flag. The marks prefixed \* on SSI 5 The Course, shall be omitted. This changes RRS 32.
- b) The RC may shorten the course in accordance with RRS32.2 - A RC vessel will fly **Flag 'S'**, the relevant fleet flag and the **Blue Finish Line Flag**.

## 7. TIME LIMIT

The time limit is 1715.

## 8. SCORING

Combined Division will be scored in the order they cross the finish line.

## 9. PRIZES

- 10.1 Pennants will be awarded for 1<sup>st</sup>, 2<sup>nd</sup>, and 3<sup>rd</sup> across the line for Combined Division as well as 1<sup>st</sup> across the line for each class / division / visiting boat, and for fastest elapsed time overall.
- 10.2 The Frank Sampson Trophy will be awarded to the first SoPYC boat across the line in the Combined Division.

---

## ADDITIONAL INFORMATION

Keep well clear of the start line until the time of your start.

Do not sail through start lines that are still in use on other race courses.

On Water Group  
South of Perth Yacht Club (Inc.)  
Coffee Point, Applecross W.A. 6153  
Ph: (08) 9364 5844

Email: [sailingadministrator@sopyc.com.au](mailto:sailingadministrator@sopyc.com.au)

## SoPYC Race Control

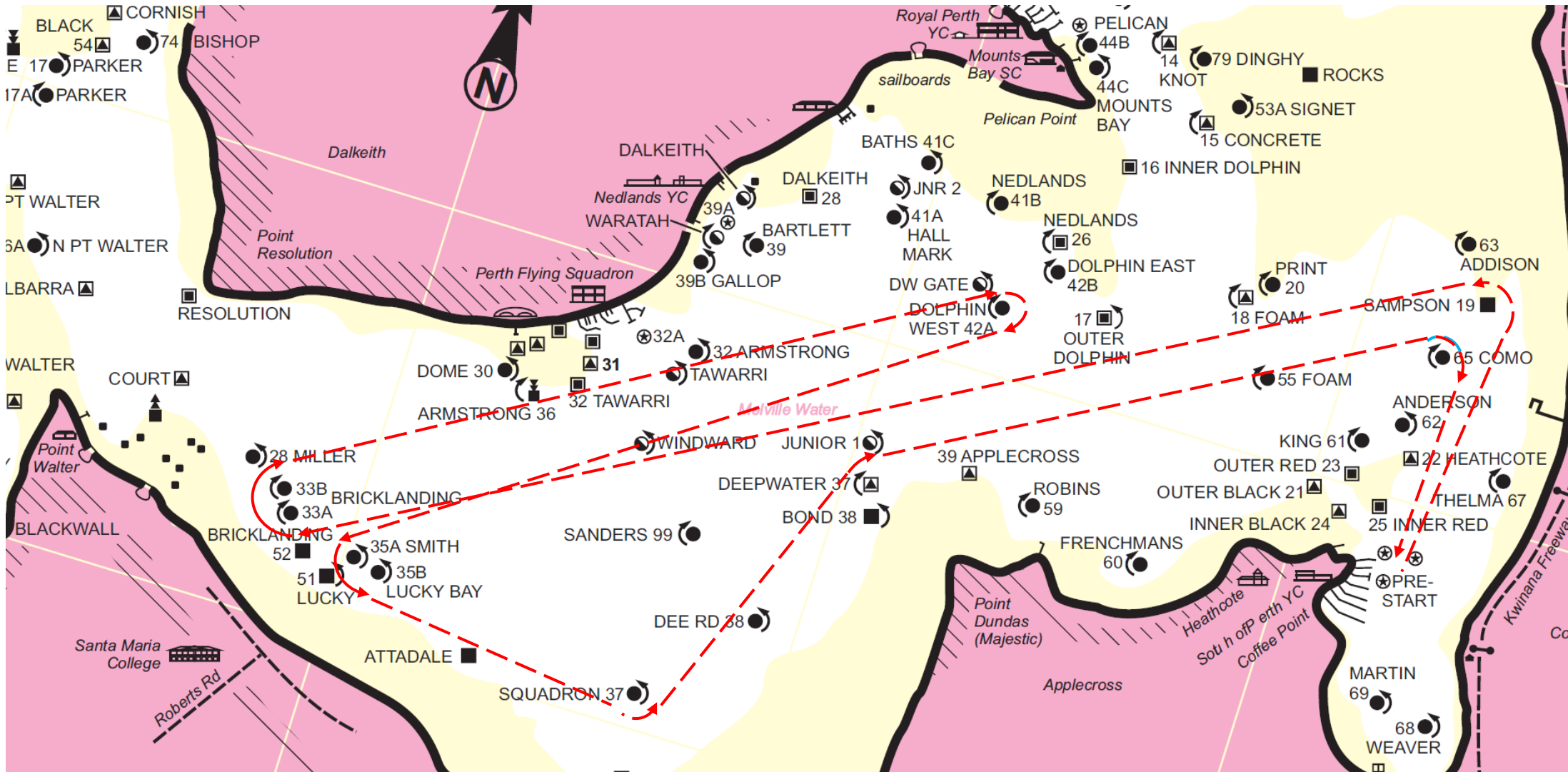
VHF Ch. 69  
0412 704 945



South of Perth Yacht Club

# Frank Sampson Course – Combined Division

This is a guide only. Use together with course description sheet.



Course

The Course may be shortened at any mark as under RSS 32.2

Date: 21/12/2024