



Goolugatup Sailing Carnival 2025

Brought to you by:



Rotary
Melville



Sailing Instructions

Hosted by South of Perth Yacht Club
(Organising Authority)

Goolugatup Sailing Carnival 2025

South of Perth Yacht Club Inc. (SoPYC)
(Organising Authority – OA)

November 21-23, 2025

*Amended NTC-GSC25-03
22/11/2025

SAILING INSTRUCTIONS (SIs)

The notation '[NP]' in a rule of the sailing instructions (SIs) means that a boat may not protest another boat for breaking that rule. This changes RRS 60.1.

The notation '[SP]' in a rule of the sailing instructions (SIs) means that the standard penalty for a breach of the rule may be applied by the race committee or technical committee without a hearing. A boat that has been penalised with a standard penalty shall neither be protested by another boat for the same incident nor can another boat request redress for this committee action. This changes RRS A5.

The notation [DP] Discretionary Penalty – the penalty for a breach of this rule may, at the discretion of the Protest Committee, be less than disqualification.

1. RULES

- 1.1 The event is governed by the rules as defined by:
- The Racing Rules of Sailing (RRS)*
 - The Australian Sailing (AS) Special Regulations Part 2 for Off the Beach Boats.
 - Class Association Rules where applicable,
 - Appendix T Arbitration shall apply.

2. CHANGES TO SAILING INSTRUCTIONS

- 2.1 Any change to the sailing instructions will be posted before 0900hrs on the day it will take effect, except that any change to the schedule of races will be posted by 2000hrs on the day before it will take effect.
- 2.2 Flag 'L' will be displayed from the mast in front of the SoPYC Centreboard Clubhouse when a notice is displayed. It shall be the responsibility of each boat to obtain any instructions. This flag shall be displayed until the start time of the first race to which the change applies.

3. COMMUNICATIONS WITH COMPETITORS

- 3.1 Notices to competitors will be posted on the official notice board located online.
Link: <https://sopyc.com.au/web/pages/goolugatup-sailing-carnival-20252>
- 3.2 The race office is located at the Centreboard Clubhouse.

4. CODE OF CONDUCT [DP]

- 4.1 Competitors and support persons shall comply with reasonable requests from race officials.
- 4.2 Competitors shall adhere to the [AS General Code of Conduct](#) and will be subject to RRS 69.

5. SIGNALS MADE ASHORE

- 5.1 Signals made ashore will be displayed from the signal mast at the Centreboard Clubhouse lawn.
- 5.2 When flag AP is displayed ashore, '1 minute' is replaced with 'not less than 30 minutes' in Race Signals AP. This changes RRS27.3.
- 5.3 [DP] Flag D with one sound means 'Boats shall not leave the shore until this flag is removed. If Flag D is accompanied by flag A, then this applies to Alpha course only. If Flag D is accompanied by flag B, then this applies to Bravo course only. The warning signal will not be made before the scheduled time or less than 30 minutes after flag D is removed.'

6. SCHEDULE OF RACES

- 6.1 The schedule of racing is as follows:

DATE	TIME	EVENT	
21 November 2025	14:00 – 16:00	Registration	
	16:00 – 19:00	SLALOM Windsurfer LT, WindFoil, WingFoil Racing (Refer SSI)	
22 November 2025	09:30 – 13:00	Registration	
	11:00 – 12:00	FREESTYLE Open Skiff, Optimist, ILCA 4, Windsurfer LT (Refer 'Freestyle' Instructions)	
	13:00	BRAVO Fleet Briefing	
	Racing Session 1 (Bravo)	14:00 – 16:30	BRAVO Racing – Optimist Gold, Optimist Silver, Open Skiff Gold, Open Skiff Silver
	Racing Session 1 (Alpha)	15:00 – 17:30	ALPHA Racing – ILCA 4, 6, 7, 29er, Windsurfer LT, WindFoil, WingFoil
	17:00	BRAVO Debrief	
	17:30 – 18:30	Sausage Sizzle	
23 November 2025		18:00 – 19:00	Topic Night – Winning Vibes
	Racing Session 2	09:00	ALPHA & BRAVO Fleet Briefing
		10:00	First warning Signal (ALPHA and BRAVO) – Subsequent races to follow.
	Racing Session 3	14:00	First warning Signal Sprint Race (ALPHA and BRAVO) – Subsequent races to follow.
		17:00	Presentations
	18:00	ILCA Masters Dinner (Ala Carte)	

a) The ILCA Master series and results will only be comprised of races conducted on Sunday 23rd, November.

6.2 To alert boats while on water, that a race or sequence of races will begin soon, the orange starting line flag will be displayed with one sound at least three minutes before a warning signal is made.

6.3 On November 23, no warning signal will be made after 1600hrs.

7. EQUIPMENT

Competitors shall always wear a personal floatation device that shall conform to the minimum standard ISO 12402-5 (level 50) whilst afloat.

8. CLASS FLAGS

The class flags are:

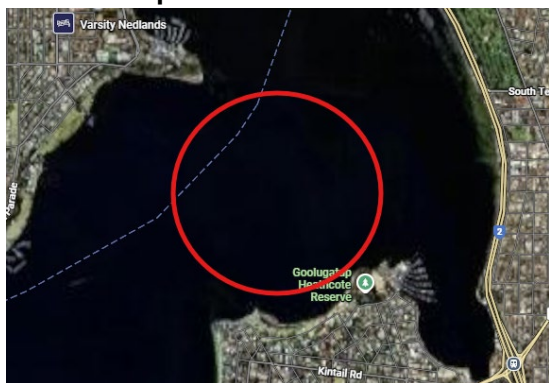


8.1 Intermediate fleet competitors shall fly a pink streamer attached to the top of their mast.

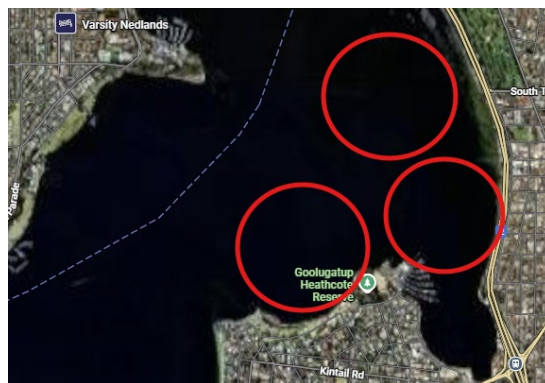
9. RACING AREA

The approximate racing area for each course is shown in the diagram below:

Alpha Course Areas



Bravo Course Areas



10. COURSES & MARKS

- 10.1 The diagrams in Attachment 1 show the courses and the side on which each mark is to be left.
- 10.2 [NP][SCP] An orange flag displayed on a Race Committee (RC) vessel will identify that the line is in use and a boat shall not pass in either direction through it except between its warning and starting signal, when finishing, or when using the mark of the line as a rounding mark.
- 10.3 All fleets shall follow the "Section C – at Mark and Obstructions" Rules. This changes RRS Appendix B (Windsurfer) & Appendix HS (High-Speed)
- 10.4 All fleets shall observe RRS Definition: "Zone" (three hull lengths). This changes RRS Appendix B & Appendix HS

11. THE START

- 11.1 Races will be started as follows. This changes RRS 26.

Minutes before Starting Signal	Visual Signal	Sound Signal	Meaning
3	Class flag	One	Warning signal
2	P, U or Black flag	One	Preparatory signal
1	Preparatory flag removed	One long	One minute to start
0	Class flag removed	One	Starting signal

- 11.2 The starting line is between a staff displaying orange flag on a RC boat at the starboard end and a black & white checkered buoy at the port end.
- 11.3 [DP] Boats whose warning signal has not been made shall avoid the starting area during the starting sequence for other races.
- 11.4 A boat that does not start within 3-minutes after her starting signal shall be scored 'Did Not Start' (DNS). This changes RRS A.5.
- 11.5 **General Recall:** When a General Recall is signalled, the 'First Substitute' flag will be displayed for 1 minute. The warning signal for a new start for the first recalled fleet will be made at the starting signal of the last fleet in the original sequence. New starts for other recalled fleets will follow in the order thereafter. This changes RRS 29.2 and race signal, 'First Substitute'.
- 11.6 Classes may be started in any order and combined with other classes or fleets.
- 11.7 The warning signal for subsequent races for a fleet during a Race Session, will not be made within a 3-minute window of the finishing time of the last boat in that fleet, or the end of the finishing window for the fleets race – whichever occurs first.

12. CHANGE OF THE NEXT LEG OF THE COURSE [NP]

To change the next leg of the course, the race committee will move the original mark or the finishing line to a new position. There may be no 'code flag' nor sound signal to indicate the change. This changes RRS 33.

13. THE FINISH

The finish is between a staff displaying a blue flag on a RC boat and an inflatable 'blue' buoy as shown on the course diagram.

14. PENALTY SYSTEM – Refer NoR

15. TIME LIMITS AND TARGET TIMES

15.1 Time limits shall apply to each class in accordance with the table below:

All Fleets

Race Sessions	Target Time	Time Limit for 1 st Boat	Finishing Window
Saturday (All sessions) & Sunday AM Sessions	25 mins	35 mins	10 mins
Sunday PM Session	15 mins	20 mins	5 mins

15.2 If no boat sails the course and finishes within the Time Limit for the first boat, then the race will be abandoned.

15.3 The Finishing Window is the time for boats to finish after the first boat sails the course and finishes. Boats failing to finish within the Finishing Window, and not subsequently retiring, penalized or given redress, will be scored Did Not Finish (**DNF**) without a hearing.

15.4 Failure to meet the Target Times will not be grounds for redress.

16. HEARING REQUESTS

16.1 The protest time limit is 60 minutes after the last boat finishes the last race of the session or the race committee signals no more racing today, whichever is later. The time will be posted on the official notice board. The protest time limit may be different for different race areas.

16.2 Boats intending to protest shall inform the Race Committee immediately after finishing by approaching the starboard side of the RC vessel and hailing the protested boats sail number and receiving acknowledgement from the RC. This changes RRS 60.2.

16.3 Hearing request forms are available from the race office at the Centreboard Clubhouse.

16.4 Notices will be posted no later than 30 minutes after the protest time limit to inform competitors of hearings in which they are parties or named as witnesses. Hearings will be held in the protest room, located at the 'Committee' room, located in the main clubhouse.

17. SCORING – Refer NoR

The Low Point scoring system of Appendix A will apply. Slalom racing on Friday 21 November is scored as a separate series (Refer SSIs).

18. SAFETY REGULATIONS [SCP][NP]

18.1 Boats shall sign-on before leaving the shore.

18.2 Boats shall sign off upon returning to shore within 60 minutes after the last boat finishes the last race of that session or the race committee signals no more racing for that session, whichever is later. The Sign On/Off is available via paper documents at or near the Race Office.

18.3 A boat that retires from a race shall notify the race committee at the first reasonable opportunity.

18.4 The penalty for SI 18 shall be applied to the race closest to the recorded breach of rules.

19. REPLACEMENTS OF CREW OR EQUIPMENT [DP]

19.1 Substitution of competitors is not allowed without prior written approval of the Race Committee.

20. TRASH DISPOSAL

Trash may be placed aboard official or support person vessels.

21. BERTHING [DP]

Boats & equipment shall be kept in their assigned places whilst residing at SoPYC

22. PRIZES

Prizes will be given (in each class and for the ILCA 6 and 7 masters) for first place if there are at least two starters. There will be prizes for second and third place if there are at least 4 and 6 starters respectively.

Alpha Course – Session 1 & 2



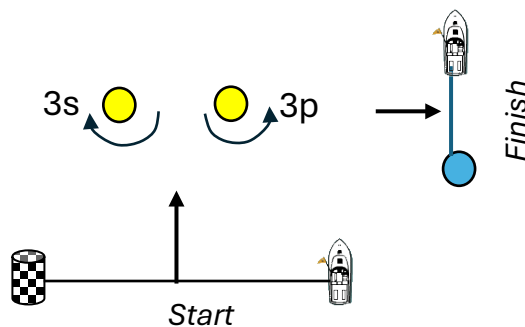
Mark Key

WindFoil / Wing Foil & ‘Gate’ (All)

29er

ILCA / LT

*Mark colours on the course will be consistent with this key



Windward / Leeward / Triangular Courses

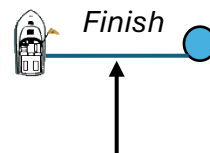
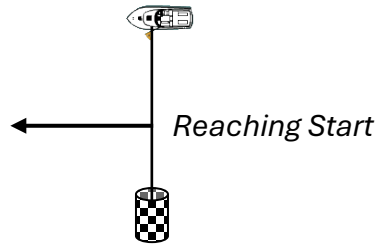
NOT TO SCALE

All Marks rounded to port unless otherwise specified.

All course marks are inflatable conical buoys

Class	Course #	Course Marks
Wind / WingFoil	1	Start – 1a – 3p - Finish
Wind / WingFoil	2	Start – 1a – 3s/3p – 1a – 3p - Finish
29er	1	Start – 1b – 3p - Finish
29er	2	Start – 1b – 3s/3p – 1b – 3p - Finish
ILCA / Windsurf LT	1	Start – 1c – 2a - 3p – Finish
ILCA / Windsurf LT	2	Start – 1c - 3s/3p – 1c – 2a - 3p – Finish

Alpha Course – Session 3



Sprint GP Courses

NOT TO SCALE

All Marks rounded to port unless otherwise specified.

All course marks are inflatable conical buoys

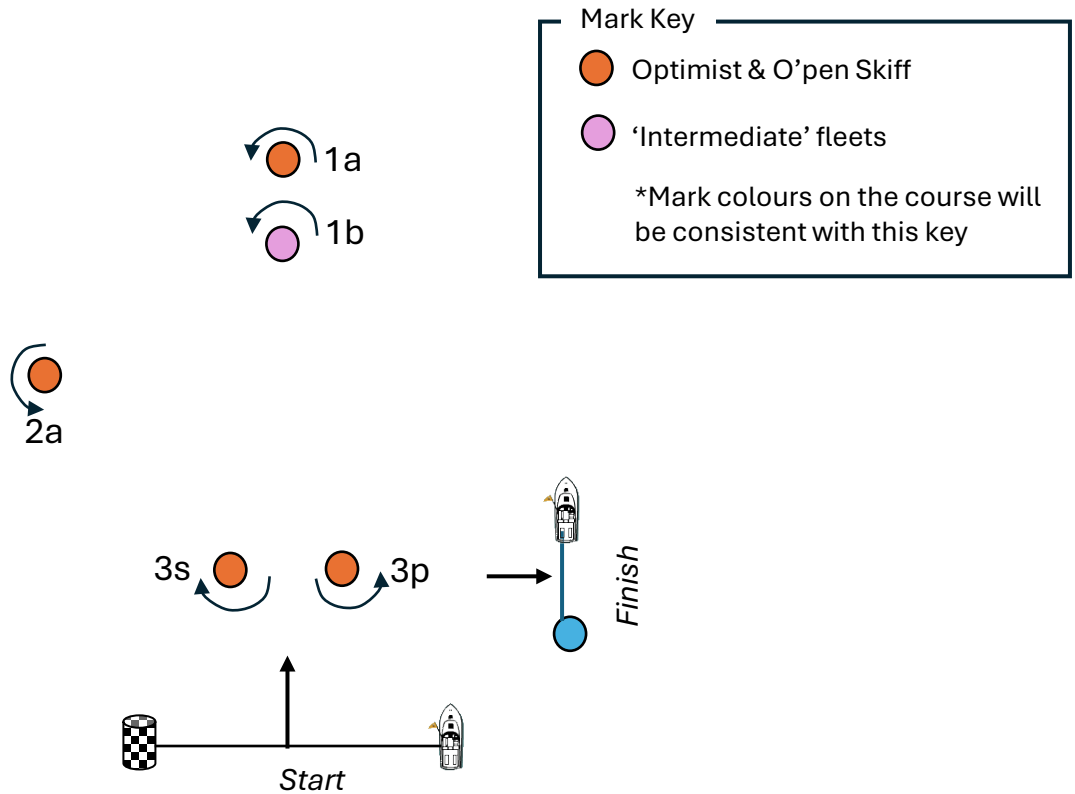
Mark Key

- All fleets
- 29er / Wing & Windfoil
- ILCA / LT

*Mark colours on the course will be consistent with this key

Class	Course #	Course Marks
Wind / WingFoil & 29er	3	Start – 1b – 2b – 3a - Finish
Wind / WingFoil	4	Start – 1b – 2b – 1b – 2b - 3a - Finish
ILCA & Windsurf LT	3	Start – 1a – 2a – 3a – Finish
ILCA & Windsurf LT	4	Start – 1a – 2a – 1a – 2a - 3a - Finish

Bravo Course – Session 1 & 2



Windward / Leeward / Triangular Courses

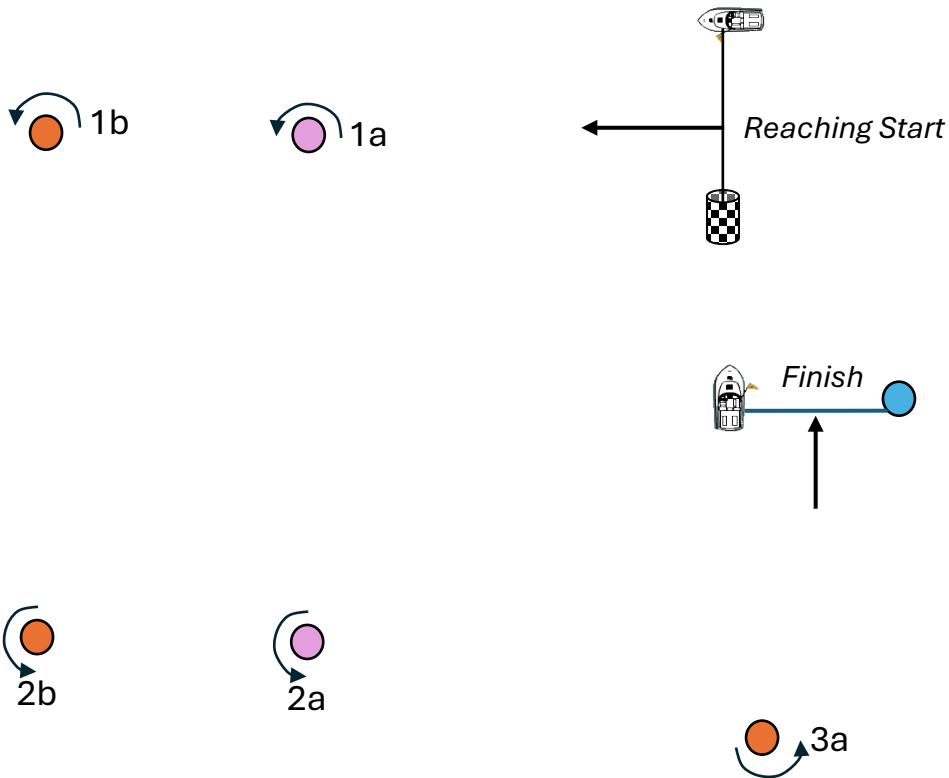
NOT TO SCALE

All Marks rounded to port unless otherwise specified.

All course marks are round ‘pimple’ buoys.

Class	Course #	Course Marks
Optimist & O’pen Skiff	1	Start – 1a – 2a - 3p - Finish
Optimist & O’pen Skiff	2	Start – 1a – 3s/3p – 1a – 2a - 3p - Finish
Intermediate fleets	1	Start – 1b – 2a - 3p - Finish
Intermediate fleets	2	Start – 1b – 3s/3p – 1b – 2a - 3p - Finish

Bravo Course – Session 3



Sprint GP Courses

NOT TO SCALE

All Marks rounded to port unless otherwise specified.

All course marks are round ‘pimple’ buoys

Mark Key

Optimist / O’pen Skiff

Intermediate fleets

*Mark colours on the course will be consistent with this key

Class	Course #	Course Marks
Optimist & O’pen Skiff	3	Start – 1b – 2b – 3a - Finish
Optimist & O’pen Skiff	4	Start – 1b – 2b – 1b – 2b - 3a - Finish
Intermediate fleets	3	Start – 1a – 2a – 3a – Finish
Intermediate fleets	4	Start – 1a – 2a – 1a – 2a - 3a - Finish