

# EFYC D'ARCY RACE & SoPYC BILLY RUN

## Saturday 7<sup>th</sup> March 2026

### SAILING INSTRUCTIONS

The notation '[NP]' in a rule means that a boat may not protest another boat for breaking that rule. The notation '[DP]' in a rule means that the penalty for a breach of the rule may, at the discretion of the race committee, be less than disqualification. This changes RRS 60.1.

## 1. Rules

- 1.1.** The Race will be governed by the rules as defined in the Racing Rules of Sailing (RRS), which includes the prescriptions and special regulations of Australian Sailing and these Sailing Instructions (SI's).

## 2. Racing Area

- 2.1.** The racing area is the Indian Ocean between Rottneest Island, Fremantle and Fairway Landfall Buoy, including Gage Roads.

## 3. Courses

### 3.1. First Mark

- If a RED or GREEN flag is displayed on the start boat, the course will be from the start line to the first windward mark (an orange and yellow cylindrical EFYC day buoy), which will be positioned approximately 500 metres upwind of the start line, then to the next mark. A RED flag requires the windward mark to be left to **PORT**, a GREEN flag to **STARBOARD**.
- **Thereafter** the courses are as below, for each Division.
- If neither flag is displayed, the courses are as below.

### 3.2. For Division 1:

- To Burnell Buoy to Port, (Lat 32 01.4'S, Long 115 44.3'E)
- To Fairway Landfall Buoy to Port (Lat 31 57.2'S, Long 115 38.9'E)
- To the Eastern South Passage transit beacon to Starboard (Lat 32 01.2'S, Long 115 37.7'E)
- To the finishing line between the finish boat flying an SoPYC Burgee and orange on station flag, and a Day Buoy, leaving Phillip Rock to port (115 33.6E 31 59.8S).

### 3.3. For Division 2:

- To Burnell Buoy to Port, (Lat 32 01.4'S, Long 115 44.3'E)
- To Gage Roads Deepwater Channel Green No. 1 marker to Port (Lat 31 58.7'S, Long 115 41.4'E)
- To the Eastern South Passage transit beacon to starboard (Lat 32 01.2'S, Long 115 37.7'E)
- To the finishing line between the finish boat flying an SoPYC Burgee and orange on station flag, and a Day Buoy, leaving Phillip Rock to port (115 33.6E 31 59.8S).

### 3.4. For Division 3:

- To Burnell Buoy to Port, (Lat 32 01.4'S, Long 115 44.3'E)
- To Gage Roads Deepwater Channel Green No. 1 marker to Port (Lat 31 58.7'S, Long 115 41.4'E)
- To the finishing line between the finish boat flying an SoPYC Burgee and orange on station flag, and a Day Buoy, leaving Phillip Rock to port (115 33.6E 31 59.8S).

### 3.5. For Divisions 4, 5 & JAM:

- To Burnell Buoy to Port, (Lat 32 01.4'S, Long 115 44.3'E)
- To the finishing line between the finish boat flying an SoPYC Burgee and orange on station flag, and a Day Buoy, leaving Phillip Rock to port (115 33.6E 31 59.8S).
- **Boats are required to radio the Chief Race Officer when passing Longitude 115 degrees 38" east. (approximately in line with Eastern South Passage Transit beacon)**

3.6. Observe rules for all navigation marks and posts as per the RRS and the WA Department of Transport requirements.

## 4. Time Limit

4.1. The race Time Limit is 1600hrs, on March 7, 2026.

## 5. The Start

- 5.1. The start line will be between the orange flag on the RC vessel 'Freedom' and a day buoy. A clearance mark may be streamed from the stern of the start boat. This clearance mark is deemed to be part of the start boat for the purposes of Rule 31 and shall be passed on the same side as the start boat when starting.
- 5.2. The start line will be set up approximately 0.5NM - NNW of the Fremantle North Mole.
- 5.3. A boat starting later than 15 minutes after her starting signal will be scored Did Not Start without a hearing.
- 5.4. Warning Signal will be at 0955.

## 6. The Finish

- 6.1. [NP] The finish will be from the RC vessel 'Nerdes II'. The finish line shall be between a staff displaying a 'orange' on station flag and a Day Buoy.
- 6.2. [NP] To alert competitors they have crossed the line, the RC intends to use one sound signal.
- 6.3. Addendum 'B' shows the approximate location of the finish. Alterations to this position will not be grounds for protest.

## 7. Safety

- 7.1. All boats shall comply with the minimum requirements of the WA Department of Transport regulations for craft proceeding beyond the Port of Fremantle to Rottnest Island including a registered EPIRB and current in-date flares.
- 7.2. In addition, boats shall comply with minimum standards required by the special regulations of Australian Sailing ISAF Category 6. Compliance checklists must be submitted to EFYC office by COB on the day before the Race. For EFYC members, that must be signed off by an equipment auditor. For SoPYC or visiting boats these can be self audited. Failure to do so will result in boats being recorded as DNS without a hearing.
- 7.3. All boats must have an additional form of propulsion, either an outboard or inboard motor.
- 7.4. Boats shall carry an operational VHF marine radio transceiver. Boats shall use and maintain a constant listening watch on VHF Channel 77 while racing. If Ch.77 is busy, the go-to channel

is VHF Ch.71. The emergency channel is VHF Ch.16. Dual watch of both channels is encouraged for all boats.

- 7.5. All boats must have submitted a Crew Registration Form complete with all details for every person onboard via email no later than the conclusion of the mandatory event briefing on Thursday, March 5<sup>th</sup>.
- 7.6. Any changes to this must be conveyed to the radio operator on the start boat during their radio check. Failure to submit a form and /or update the details will result in the boat being recorded DNS without a hearing.
- 7.7. **Each boat shall log on via radio with the Start Boat between 60 minutes and 15 minutes before the start time of Division 1.**
- 7.8. All crew members must wear at least PFD 150 life jackets at all times whilst not below deck.
- 7.9. All boats must have completed a MOB drill within 3 months prior to the start of the Race.
- 7.10. Random checks may be conducted by the Race Committee.
- 7.11. **Boats in Div 4, 5, JAM and Cruising are to radio the Race Officer when they pass 115 degrees 38 minutes East. (Approximately in line with Eastern South Passage Transit Beacon)**
- 7.12. Mobile phone must be within hearing distance and accessible.

## 8. Abandonment

- 8.1. Abandonment signal "N over A" may be flown from the yardarm at East Fremantle Yacht Club and/or from the Start Boat.

## 9. Commercial Shipping

- 9.1. Boats shall at all times keep well clear of commercial shipping, anticipating their intended courses if under way. **A BOAT MAY USE THEIR ENGINE WITHOUT PENALTY IF REQUIRED TO AVOID COMMERCIAL SHIPPING.** In doing so, boats are expected to display sportsmanship and negate any competitive advantage that may be gained by motoring.

## 10. Retiring Boats

- 10.1. The Person in Charge of any retiring boat must notify the **Race Officer** as soon as possible on VHF Ch.77 (or 71 if advised at the start that the race channels has changed).
- 10.2. The Person in Charge of any retiring boat must also notify the **Race Officer** when they reach safe harbour.
- 10.3. It is recommended that retiring boats log on with Fremantle Sea Rescue (on Ch 73) for coverage on the return to port.

## 11. Results

- 11.1. Provisional results will be announced, and pennants presented at 1800 hours on Saturday 7th March in the Sunset Bar at 'The Lodge' on Rottnest Island.
- 11.2. The overall winner of the EFYC D'arcy Race Trophy (eligibility open to EFYC yachts only) will be announced at the EFYC Keelboat Annual Presentation Night.
- 11.3. The Billy Run Trophy winner will be announced at the presentations on the island.
- 11.4. Overall results for a combined fleet (all boats), will be presented.

## 12. Protests

- 12.1. Any protest arising shall be made in writing to the Race Committee by 1700 hours on the day of the race and will be dealt with by the Arbitration process. An Arbitration Meeting will be held prior to a protest hearing for each incident resulting in a protest by a boat involving one or more rules of Part 2, Part 4 or Rule 31, but only if each party is represented by a person who was on board at the time of the incident. The Chief Race Officer will choose an appropriate independent Arbitrator with knowledge of the RRS (which may in turn be

the RO). No witnesses will be permitted. However, if the Arbitrator decides that rule 44.1(b) may apply or that arbitration is not appropriate, the meeting will not be held, and if a meeting is in progress, it will be closed.

### 13. Emergency Contact Details

**Emergency Radio:** VHF Channel 16  
**Race Management:** Start – Starting Race Officer – Alex Foster  
 Tel: 0428 120 470  
 Finish – CRO/Race Controllers – Sandy Dunn  
 Tel: 0412 179 855

**Support Boats:**

<b>1. Start Boat:</b>	<b>4. Fairway Buoy</b>
Name: "Freedom"	Name: "Tikkityboo"
RO: Alex Foster	Sk: Anthony Julien
T: 0428 120 470	T: 0447 573 071
<b>2. Burnell Buoy</b>	<b>5. Eastern South Passage</b>
Name: "The Sea-word"	Name: "My Delerium"
Sk: Rennie Stearle	Sk: Michael Douthie
T: 0409 686 680	T: 0447 710 211
<b>3. Gage Roads DeepWater</b>	<b>6. Finish Boat:</b>
Name: "Roebuck"	Name: "Neredes II"
Sk: Comm. Ben James	RO: Sandy Dunn
T: 0403 302 025	T: 0412 179 855
<b>7. J&amp;M / Div 4 Follow Boat</b>	
Name: "Reef Runner"	
Sk: Mike & Shane Markham	
T: 0403 186 799	

**NB: Check with Race Management Plan for latest Support Boat on-station positions**



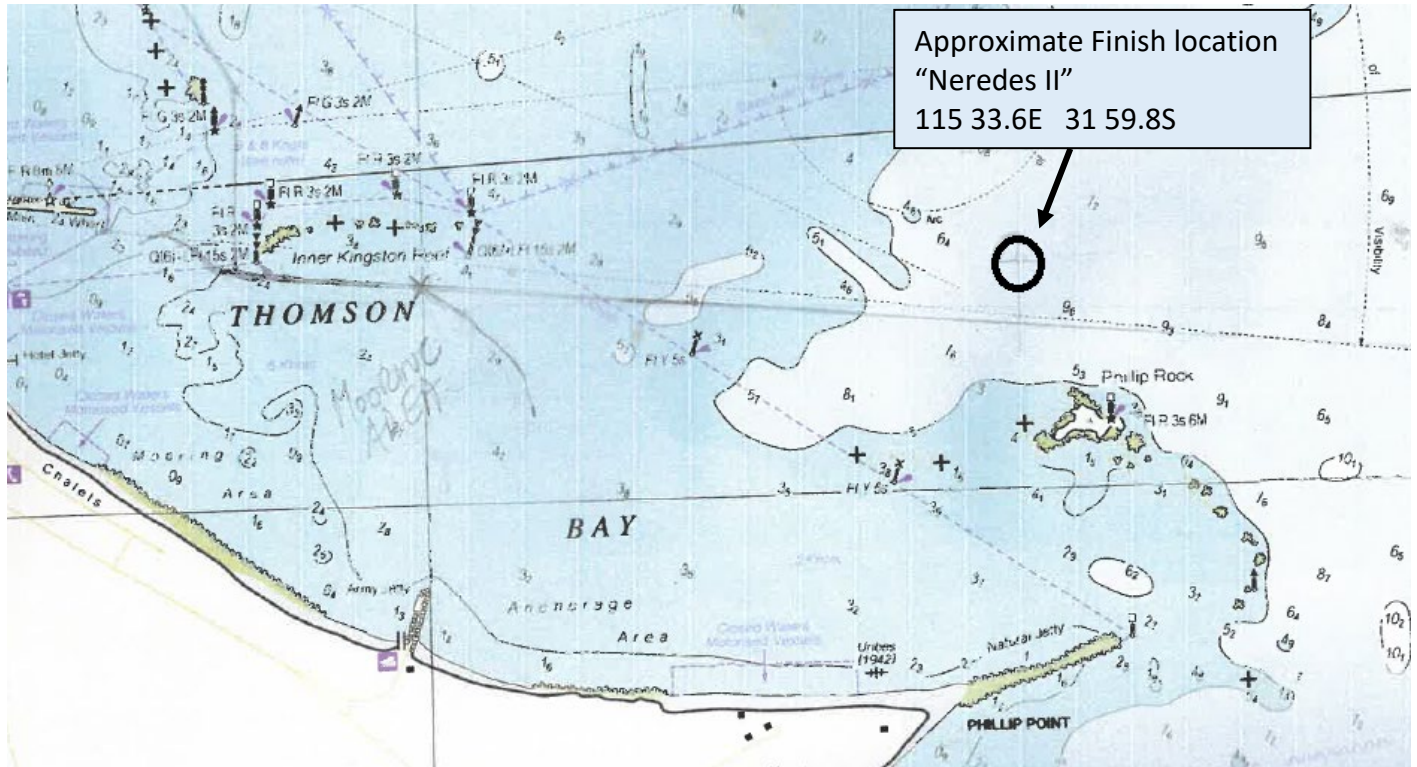
## Addendum A – Courses



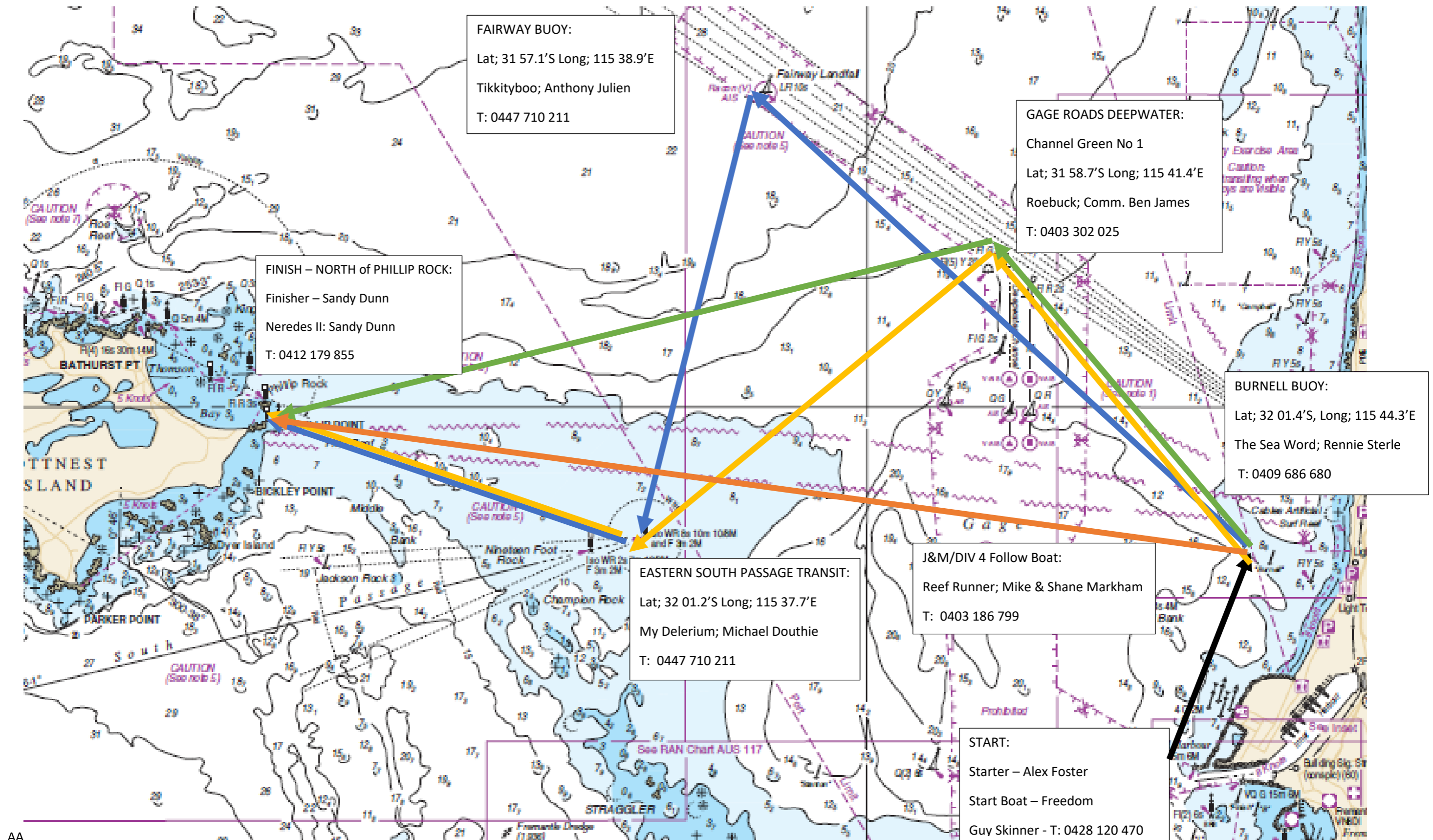
## Addendum B – Finish Line

**Please Note: the Finish Line is NOT in the same place as previous years.**

Approximate GPS location of the Finish Boat “Neredes II” – 115.33.6E, 31.59.8S



# Addendum A - Course Sheet



AA

